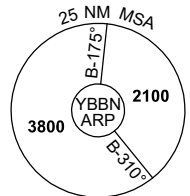
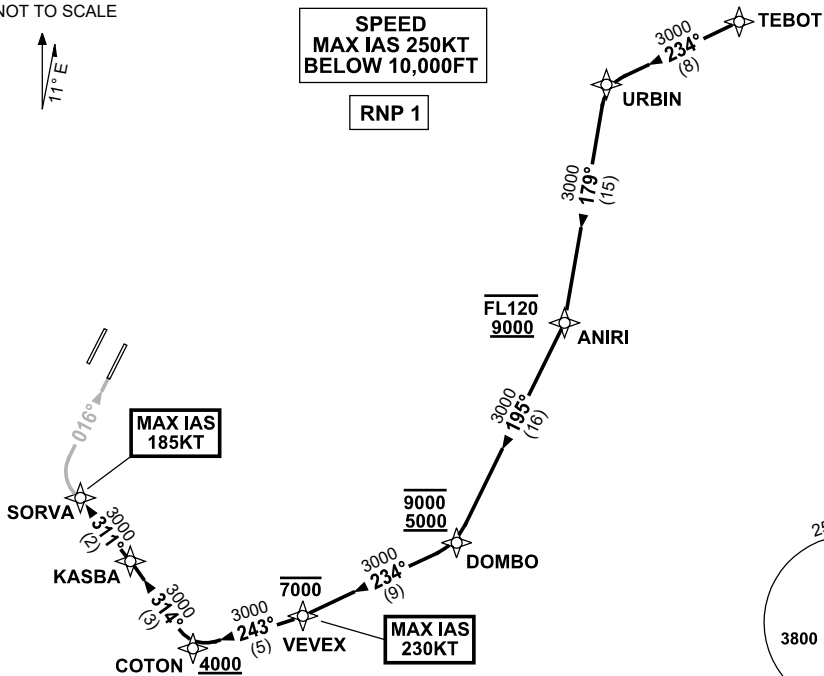


9 SEP 2021

ATIS 113.2 125.5	APP NORTH 124.7 SOUTH 125.6 FINALS 119.25	TWR 01R/19L 120.5 01L/19R 118.0	SMC NORTH 124.05 DOM 121.7 SOUTH 122.25	Bearings are Magnetic Elevations in FEET AMSL
---------------------	--	---------------------------------------	--	--

**SPEED
MAX IAS 250KT
BELOW 10,000FT**

RNP 1



10 NM MSA 2500

ARRIVAL: TEBOT ONE X-RAY

RWY 01R:

- From TEBOT track 234° to URBIN
- Turn LEFT, track 179° to ANIRI
Cross ANIRI BTN 9000FT and FL120
- Turn RIGHT, track 195° to DOMBO
Cross DOMBO BTN 5000FT AND 9000FT
- Turn RIGHT, track 234° to VEVEX
Cross VEVEX AT or BLW 7000FT
MAX IAS 230KT AT VEVEX
- Turn RIGHT, track 243° to COTON
Cross COTON AT or ABV 4000FT
- Turn RIGHT, track 314° to KASBA
- Turn LEFT, track 311° to SORVA for
RNP X RWY 01R (AR) approach
MAX IAS 185KT AT SORVA

**COMMUNICATIONS FAILURE: PROCEDURE IN IMC
IF ABLE CTC BN ATC ON TEL: (07) 3866-3694**

- Squawk 7600, comply with vertical navigation requirements, but not below MSA.
- Track via the latest STAR clearance to the nominated runway, then fly the most suitable approach in accordance with ERSA EMERG Section 1.5.

Changes: Editorial.

BBNSR30-168