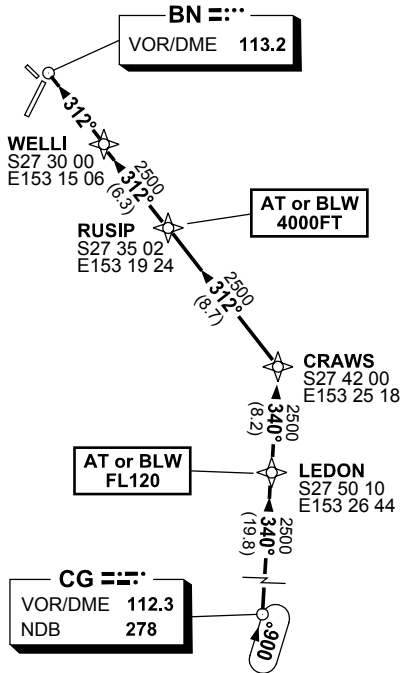


**STANDARD INSTRUMENT ARRIVAL (STAR)
GOLD COAST ONE VICTOR ARRIVAL (RNAV) RWY 14/32
BRISBANE, QLD (YBBN)**

9 NOV 2017

ATIS 113.2 125.5	APP 125.6	TWR 120.5	SMC 121.7	BRG are MAG ELEV in FEET AMSL
---------------------	--------------	--------------	--------------	----------------------------------

NOT TO SCALE



**SPEED
MAX IAS 250KT
BELOW 10,000FT**

ATC APCH SPEEDS	
NM FM TD	SPEED KT
20	AT 230
10	185 -160
5	160 -150

10 NM MSA 2500

ARRIVAL: GOLD COAST (CG) ONE VICTOR

- RWY 14:** From CG VOR track 340° to LEDON
Cross LEDON AT or BLW FL120
- Track 340° to CRAW
 - Turn LEFT, track 312° to RUSIP
 - **Cross** RUSIP AT or BLW 4000FT
 - Track 312° to WELLI, thence 312° to BN VOR
 - Report airport in sight for tracking instructions to final RWY 14

- RWY 32:** From CG VOR track 340° to LEDON
Cross LEDON AT or BLW FL120
- Track 340° to CRAW
 - Turn LEFT, track 312° to RUSIP
 - **Cross** RUSIP AT or BLW 4000FT
 - Track 312° to WELLI, thence 312° to BN VOR
 - Report airport in sight for tracking instructions to final RWY 32

**COMMUNICATIONS FAILURE: PROCEDURE IN IMC
IF ABLE CTC BN ATC ON TEL: (07) 3866-3694**

- Squawk 7600, comply with vertical navigation requirements, but not below MSA.
- Track via the latest STAR clearance to the nominated runway, then fly the most suitable approach in accordance with ERS A EMERG Section 1.5.

Changes: CHART NAME, APCH SPEEDS.

BBNSR27-153