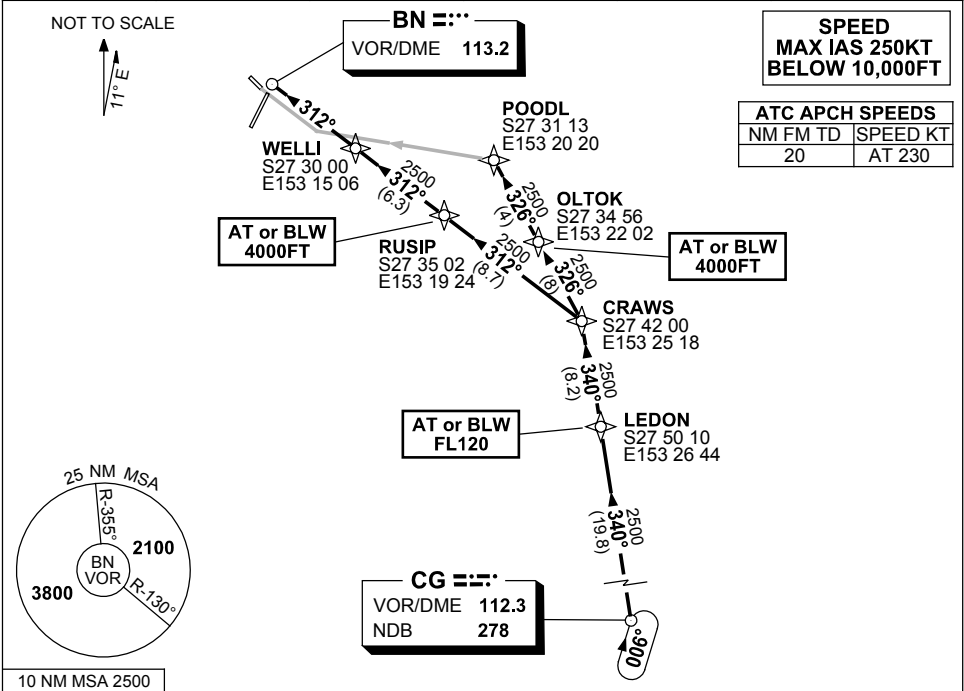


**STANDARD INSTRUMENT ARRIVAL (STAR)
GOLD COAST ONE ALPHA ARRIVAL (RNAV) RWY 14/32
BRISBANE, QLD (YBBN)**

9 NOV 2017

ATIS 113.2 125.5	APP NORTH 124.7 SOUTH 125.6	TWR 120.5	SMC 121.7	Bearings are Magnetic Elevations in FEET AMSL
---------------------	-----------------------------------	--------------	--------------	--



ARRIVAL: GOLD COAST (CG) ONE ALPHA

- RWY 14:** From CG VOR track 340° to LEDON
Cross LEDON AT or BLW FL120
- Track 340° to CRAWNS
 - Turn LEFT, track 312° to RUSIP
 - Cross** RUSIP AT or BLW 4000FT
 - Track 312° to WELLI, thence 312° to BN VOR RWY 14 approach

- RWY 32:** From CG VOR track 340° to LEDON
Cross LEDON AT or BLW FL120
- Track 340° to CRAWNS
 - Turn LEFT, track 326° to OLTOK
 - Cross** OLTOK AT or BLW 4000FT
 - Track 326° to POODL for RNAV-Z (GNSS) RWY 32 approach

**COMMUNICATIONS FAILURE: PROCEDURE IN IMC
IF ABLE CTC BN ATC ON TEL: (07) 3866-3694**

- Squawk 7600, comply with vertical navigation requirements, but not below MSA.
- Track via the latest STAR clearance to the nominated runway, then fly the most suitable approach in accordance with ERSA EMERG Section 1.5.

Changes: CHART NAME, APCH SPEEDS.

BBNSR26-153