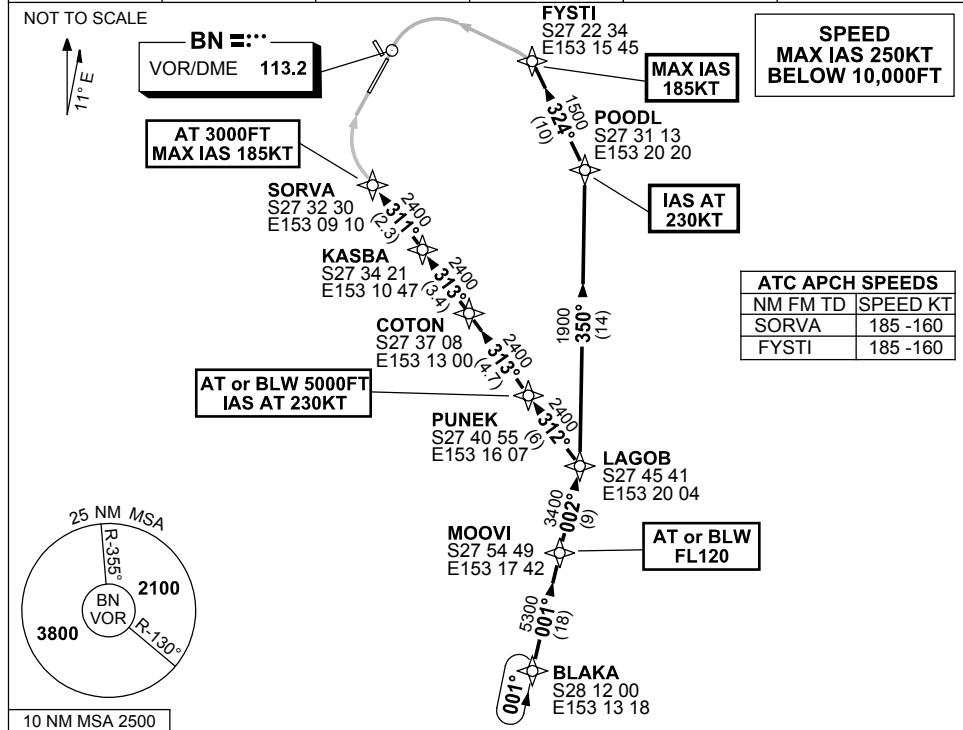


**STANDARD INSTRUMENT ARRIVAL (STAR)
BLAKA NINE PAPA ARRIVAL (RNAV)
BRISBANE, QLD (YBBN)**

9 NOV 2017

ATIS 113.2 125.5	APP 125.6	TWR 120.5	SMC 121.7	Bearings are Magnetic Elevations in FEET AMSL
---------------------	--------------	--------------	--------------	--



- ARRIVAL:** **BLAKA NINE PAPA**
From BLAKA track 001° to MOOVI
Cross MOOVI AT or BLW FL120
- RWY 01:**
From MOOVI track 002° to LAGOB
Cross LAGOB AT or BLW FL120
From LAGOB track 312° to PUNEK
IAS AT 230KT from PUNEK
Cross PUNEK AT or BLW 5000FT
- Track 313° to COTON
 - Track 313° to KASBA
 - Track 311° to SORVA
- Cross** SORVA AT 3000FT
From SORVA track via RNAV-P (RNP) RWY 01
MAX IAS 185KT from SORVA
- RWY 19:**
From LAGOB track 350° to POODL
IAS AT 230KT from POODL
- Track 324° to FYSTI
 - From FYSTI track via RNAV-P (RNP) RWY 19
MAX IAS 185KT from FYSTI

**COMMUNICATIONS FAILURE: PROCEDURE IN IMC
IF ABLE CTC BN ATC ON TEL: (07) 3866-3694**

- Squawk 7600, comply with vertical navigation requirements, but not below MSA.
- Track via the latest STAR clearance to the nominated runway, then fly the most suitable approach in accordance with ERSA EMERG Section 1.5.

Changes: CHART NAME, APCH SPEEDS, Editorial.

BBNSR22-153