

**STANDARD INSTRUMENT ARRIVAL (STAR)
SINNK NINE ARRIVAL (RNAV)
BRISBANE, QLD (YBBN)**

9 NOV 2017

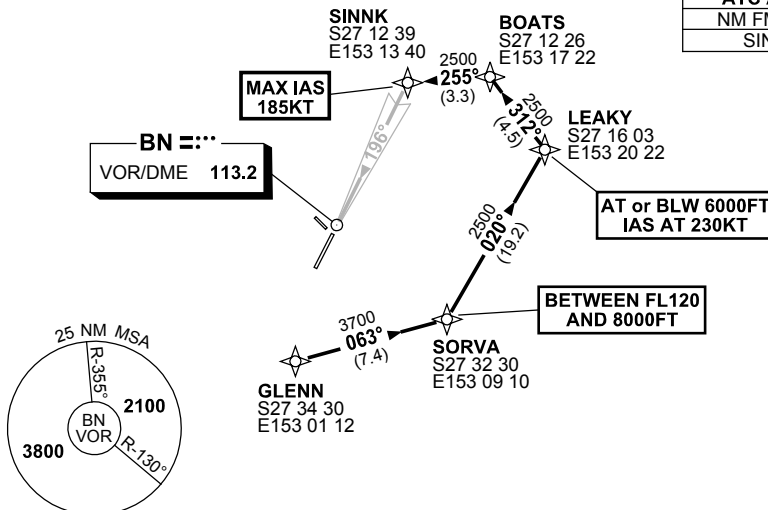
ATIS 113.2 125.5	APP NORTH 124.7 SOUTH 125.6	TWR 120.5	SMC 121.7	Bearings are Magnetic Elevations in FEET AMSL
---------------------	-----------------------------------	--------------	--------------	--

NOT TO SCALE



**SPEED
MAX IAS 250KT
BELOW 10,000FT**

ATC APCH SPEEDS	
NM FM TD	SPEED KT
SINNK	185 -160



10 NM MSA 2500

TRANSITIONS:

- GLENN:** From GLENN track 063° to SORVA
Cross SORVA BETWEEN FL120 AND 8000FT
- Turn LEFT track 020° to LEAKY
Cross LEAKY AT or BLW 6000FT
IAS AT 230KT from LEAKY
 - Turn LEFT track 312° to BOATS
 - Turn LEFT track 255° to SINNK,
then FLW ARRIVAL instructions
MAX IAS 185KT from SINNK

ARRIVAL: SINNK NINE

RWY 19: From SINNK track via ILS, RNAV-Z (GNSS), LOC or VOR RWY 19 approach.

**COMMUNICATIONS FAILURE: PROCEDURE IN IMC
IF ABLE CTC BN ATC ON TEL: (07) 3866-3694**

- Squawk 7600, comply with vertical navigation requirements, but not below MSA.
- Track via the latest STAR clearance to the nominated runway, then fly the most suitable approach in accordance with ERS A EMERG Section 1.5.