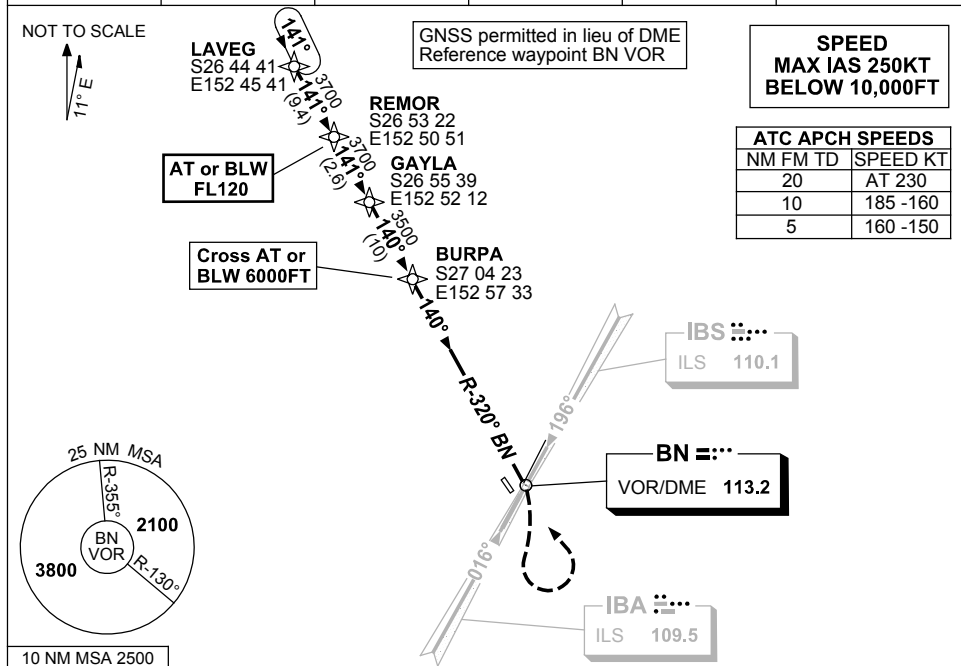


**STANDARD INSTRUMENT ARRIVAL (STAR)
LAVEG ONE ARRIVAL (RNAV)
BRISBANE, QLD (YBBN)**

9 NOV 2017

ATIS 113.2 125.5	APP 124.7	TWR 120.5	SMC 121.7	Bearings are Magnetic Elevations in FEET AMSL
---------------------	--------------	--------------	--------------	--



ARRIVAL: LAVEG ONE
From LAVEG track 141° to REMOR
Cross REMOR AT or BLW FL120
Track 141° to GAYLA
From GAYLA track 140° to BURPA.
Cross BURPA AT or BLW 6000FT.

RWY 01 From BURPA track 140° to BN VOR.
Expect radar vectors for instrument approach RWY 01.
In VMC expect tracking instructions to final RWY 01.

RWY 19 From BURPA track 140° to BN VOR.
Expect radar vectors for instrument approach RWY 19.
In VMC expect tracking instructions to final RWY 19.

RWY 14 From BURPA track 140° to BN VOR.
Expect radar vectors for instrument approach RWY 14.
In VMC expect tracking instructions to final RWY 14.

RWY 32 (VISUAL) From BURPA track 140° to BN VOR.
From BN VOR track for LEFT base RWY 32.

**COMMUNICATIONS FAILURE: PROCEDURE IN IMC
IF ABLE CTC BN ATC ON TEL: (07) 3866-3694**

- Squawk 7600, comply with vertical navigation requirements, but not below MSA.
- Track via the latest STAR clearance to the nominated runway, then fly the most suitable approach in accordance with ERSA EMERG Section 1.5.

Changes: CHART NAME, APCH SPEEDS, Editorial.

BBNSR04-153