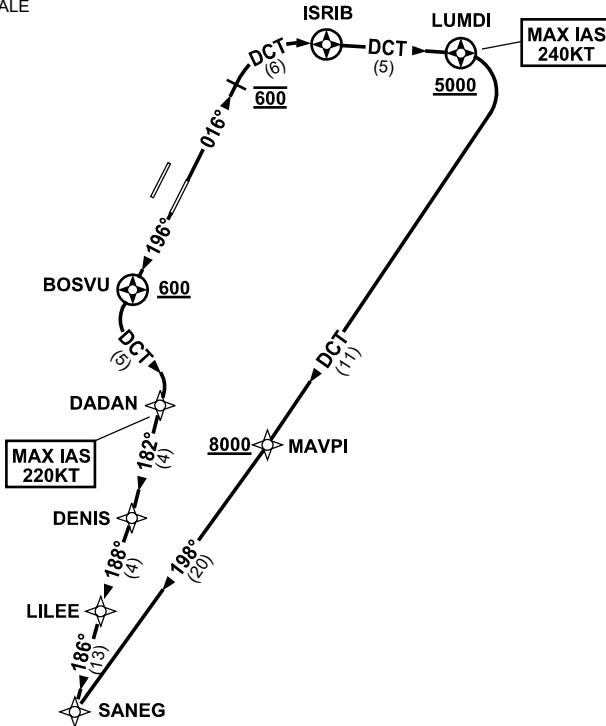


**STANDARD INSTRUMENT DEPARTURES (SID)
SANEG ONE DEPARTURE (RNAV) RWY 01R/19L
BRISBANE, QLD (YBBN)**

9 SEP 2021

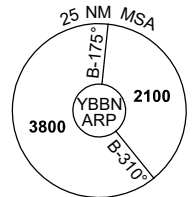
| | | | | | | | |
|---------------------|---------------|-----------------|---------------------|-----------------|---------------------------------------|---------------|--|
| ATIS 113.2 125.5 | ACD 118.85 | NORTH 124.05 | SMC DOM 121.7 | SOUTH 122.25 | TWR 01R/19L 120.5 01L/19R 118.0 | DEP 118.45 | Bearings are Magnetic Elevations in FEET AMSL |
|---------------------|---------------|-----------------|---------------------|-----------------|---------------------------------------|---------------|--|

NOT TO SCALE



**SPEED
MAX IAS 250KT
BELOW 10,000FT**

RNP 1



10 NM MSA 2500

DEPARTURE: SANEG ONE

RWY 01R

GRAD 3.3% (3.8% TO 2000FT)
MAX IAS 240KT until LUMDI

- Track 016°
- At 600FT turn RIGHT, track DCT to ISIRIB
- Turn RIGHT, track DCT to LUMDI
Cross LUMDI AT or ABV 5000FT
(RQ GRAD TO LUMDI: 7.3%)
- Turn RIGHT, track DCT to MAVPI
Cross MAVPI AT or ABV 8000FT
(RQ GRAD TO MAVPI: 4.6% FM LUMDI)
- Track 198° to SANEG

RWY 19L

GRAD 3.3% (5.0% TO 3000FT)
MAX IAS 220KT until DADAN

- Track 196°
- After passing BOSVU **AND** 600FT turn LEFT, track DCT to DADAN
- Turn RIGHT, track 182° to DENIS
- Turn RIGHT, track 188° to LILEE
- Turn LEFT, track 186° to SANEG

Changes: Editorial.

BBNDP17-168