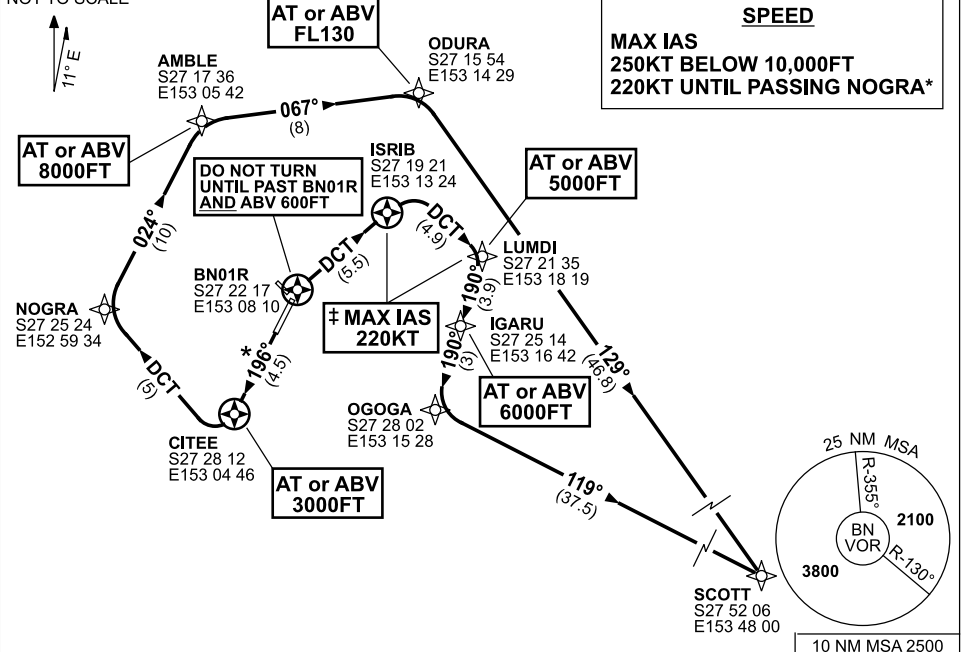


**STANDARD INSTRUMENT DEPARTURES (SID)  
RWY 01/19 SOUTH-EAST (JET)(RNAV)  
BRISBANE, QLD (YBBN)**

**12 NOV 2015**

ATIS 113.2 125.5	ACD 118.6	SMC 121.7	TWR 120.5	DEP RWY 01 118.45	DEP RWY 19 128.3	Bearings are Magnetic Elevations in FEET AMSL
---------------------	--------------	--------------	--------------	----------------------	---------------------	--

NOT TO SCALE



**SCOTT ONE DEPARTURE**

**RWY 01**

- GRAD 3.3%
- Track 016° to BN01R
- After passing BN01R, **AND** 600FT, turn RIGHT track DCT to ISIRIB
- At ISIRIB turn RIGHT, track DCT to LUMDI
- ‡ **MAX IAS 220KT TO LUMDI**
- **Cross** LUMDI AT or ABV 5000FT
- Track 190° to IGARU
- **Cross** IGARU AT or ABV 6000FT
- Track 190° to OGOGA
- Turn LEFT intercept and track 119° to SCOTT, thence as cleared

**RWY 19**

- GRAD 10.8% to 3000FT, thence 3.3%
- \* **MAX IAS 220KT UNTIL PASSING NOGRA**
- Track 196° to CITEE
- **Cross** CITEE AT or ABV 3000FT
- At CITEE turn RIGHT, track DCT to NOGRA
- Turn RIGHT track 024° to AMBLE
- **Cross** AMBLE AT or ABV 8000FT
- Turn RIGHT track 067° to ODURA
- **Cross** ODURA AT or ABV FL130
- Turn RIGHT track 129° to SCOTT, thence as cleared