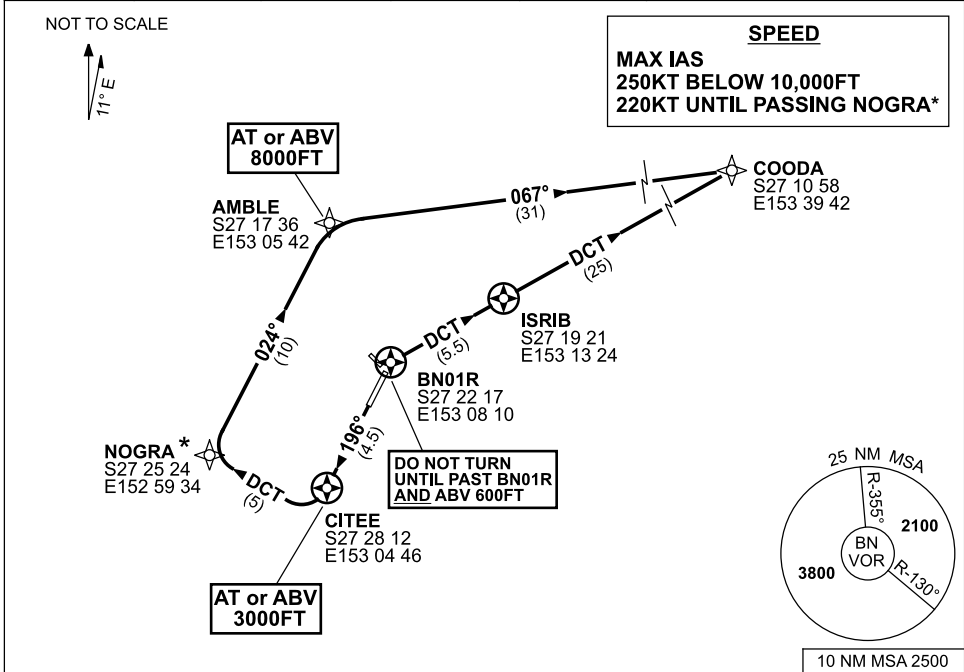


**STANDARD INSTRUMENT DEPARTURES (SID)
RWY 01/19 NORTH-EAST (JET)(RNAV)
BRISBANE, QLD (YBBN)**

12 NOV 2015

ATIS 113.2 125.5	ACD 118.6	SMC 121.7	TWR 120.5	DEP RWY 01 118.45	DEP RWY 19 128.3	Bearings are Magnetic Elevations in FEET AMSL
---------------------	--------------	--------------	--------------	----------------------	---------------------	--



COODA THREE DEPARTURE

RWY 01

- GRAD 3.3%
- Track 016° to BN01R
- After passing BN01R, **AND** 600FT, turn **RIGHT** track DCT to ISRIB
- At ISRIB turn **RIGHT**, track DCT to COODA, thence as cleared

RWY 19*

- GRAD 10.8% to 3000FT, then 3.3%
- MAX IAS 220KT UNTIL PASSING NOGRA
- Track 196° to CITEE
- Cross** CITEE AT or ABV 3000FT
- At CITEE turn **RIGHT**, track DCT to NOGRA
- Turn **RIGHT**, track DCT to NOGRA
- Cross** AMBLE AT or ABV 8000FT
- Turn **RIGHT** track 067° to COODA, thence as cleared

Changes: MSA, Editorial.

BBNDP07-145