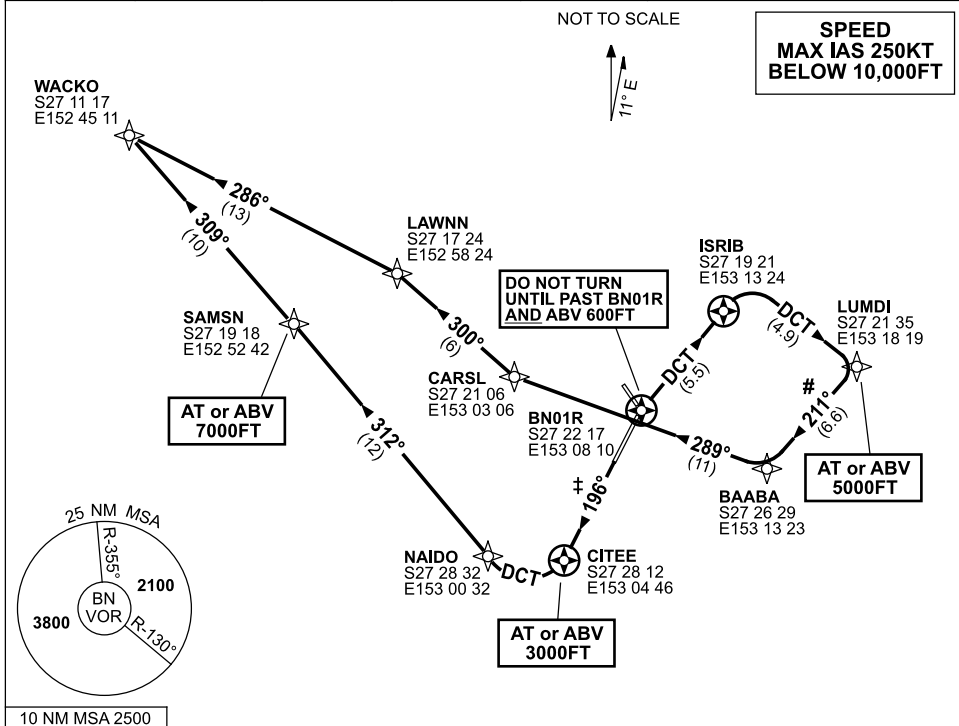


**STANDARD INSTRUMENT DEPARTURES (SID)
RWY 01/19 WEST (JET) (RNAV)
BRISBANE, QLD (YBBN)**

26 MAY 2016

ATIS 113.2 125.5	ACD 118.6	SMC 121.7	TWR 120.5	DEP RWY 01 118.45	DEP RWY 19 128.3	Bearings are Magnetic Elevations in FEET AMSL
---------------------	--------------	--------------	--------------	----------------------	---------------------	--



WACKO ONE DEPARTURE

RWY 01

- GRAD 3.3%
- Track 016° to BN01R
- After passing BN01R **AND** 600FT, turn **RIGHT** track DCT to ISRIB
- At ISRIB, turn **RIGHT**, track DCT to LUMDI
Cross LUMDI AT or ABV 5000FT
- Turn **RIGHT**, track 211° to BAABA
MAX IAS to BAABA 220KT
- Turn **RIGHT**, track 289° to CARSL
- Turn **RIGHT**, track 300° to LAWNN
- Turn **LEFT**, track 286° to WACKO

RWY 19

- ± **MAX IAS** 220KT until NAIDO
- GRAD 10.8% to 3000FT, thence 3.3%
- Track 196° to CITEE
Cross CITEE AT or ABV 3000FT
- At CITEE, turn **RIGHT**, track DCT to NAIDO
- Track 312° to SAMSN
Cross SAMSN AT or ABV 7000FT
- Turn **LEFT**, track 309° to WACKO

Changes: PROC NAME, WACKO-IBUNA DELETED.

BBNDP06-147