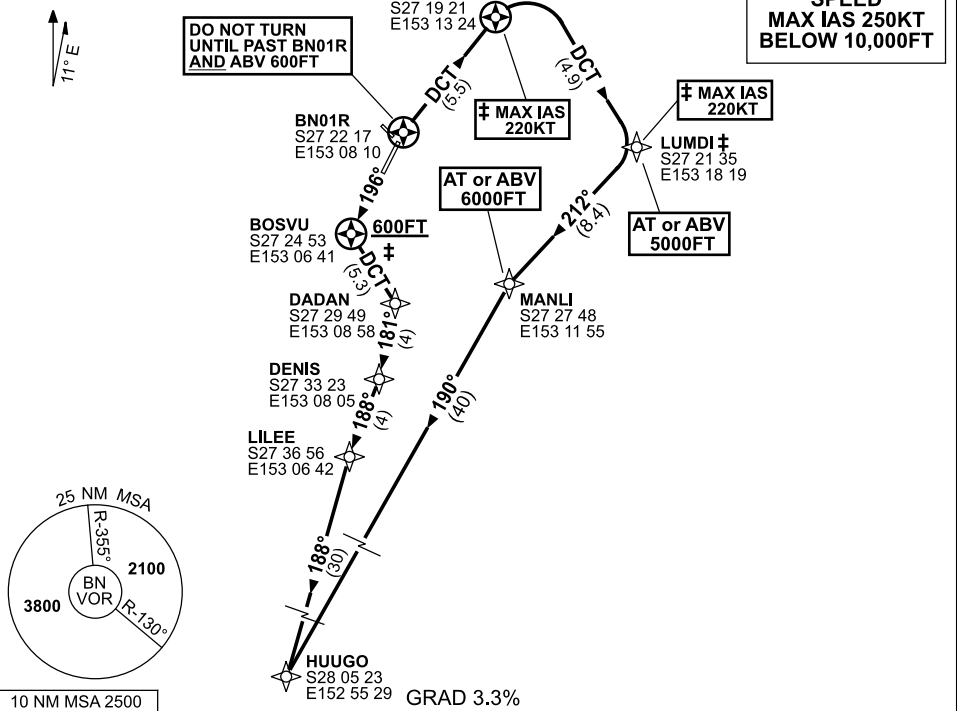


**STANDARD INSTRUMENT DEPARTURES (SID)
RWY 01/19 SOUTH (JET)(RNAV)*
BRISBANE, QLD (YBBN)**

26 MAY 2016

ATIS 113.2 125.5	ACD 118.6	SMC 121.7	TWR 120.5	DEP 118.45	Bearings are Magnetic Elevations in FEET AMSL
---------------------	--------------	--------------	--------------	---------------	--

NOT TO SCALE



* TO REMAIN IN CONTROLLED AIRSPACE REACH 1500FT OR ABOVE BY 7 DME BN

HUUGO FIVE DEPARTURE

RWY 01

- Track 016° to BN01R
- After passing BN01R **AND** 600FT, turn **RIGHT** track DCT to ISIRIB turn **RIGHT** track DCT to LUMDI
- ‡ **MAX IAS 220KT** TO LUMDI
- **Cross** LUMDI AT or ABV 5000FT
- Track 212° to MANLI, **Cross** MANLI AT or ABV 6000FT
- Track 190° to HUUGO, thence as cleared

RWY 19

- Track 196° to BOSVU
- At BOSVU, and **NOT** BLW 600FT, turn **LEFT** track DCT to DADAN
- ‡ **MIN BANK 25°** IN TURN AND **MAX IAS 220KT** TO DADAN
- Track 181° to DENIS
- Track 188° to LILEE
- Track 188° to HUUGO

Changes: DEP NAME, HUUGO WPT.

BBNDP03-147