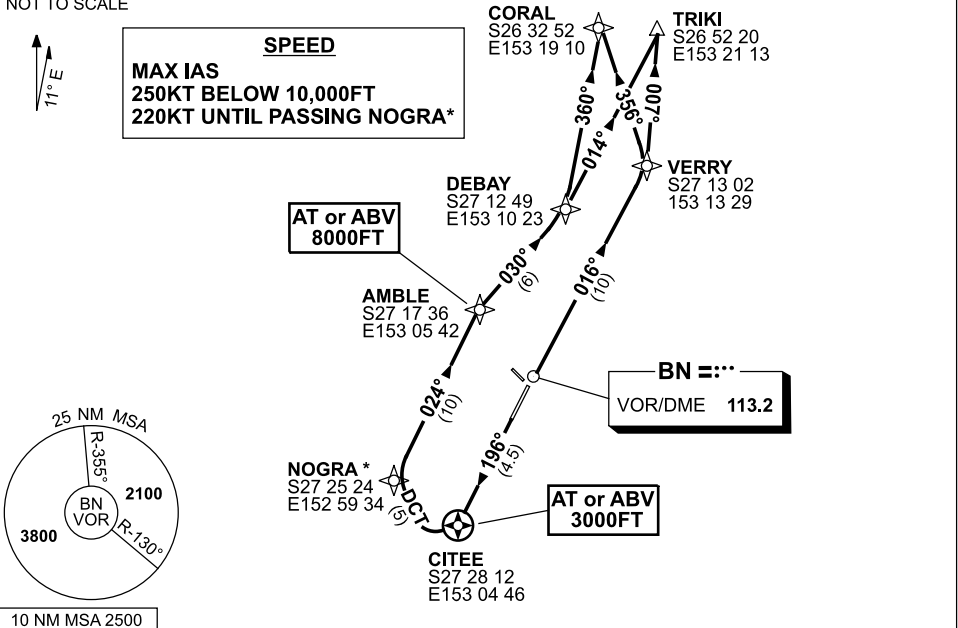


**STANDARD INSTRUMENT DEPARTURES (SID)
RWY 01/19 NORTH (JET)(RNAV)
BRISBANE, QLD (YBBN)**

12 NOV 2015

ATIS 113.2 125.5	ACD 118.6	SMC 121.7	TWR 120.5	DEP 128.3	Bearings are Magnetic Elevations in FEET AMSL
---------------------	--------------	--------------	--------------	--------------	--

NOT TO SCALE



**CORAL FOUR DEPARTURE
TRIKI FOUR DEPARTURE**

RWY 01

GRAD 3.3%

- Track 016° to VERRY
- From VERRY turn LEFT

FOR CORAL

- Track 356° to CORAL

FOR TRIKI

- Track 007° to TRIKI

RWY 19 *

GRAD 10.8% to 3000FT, thence 3.3%
MAX IAS 220KT UNTIL PASSING NOGRA

- Track 196° to CITEE
- **Cross** CITEE AT or ABV 3000FT
- At CITEE turn RIGHT
- Track DCT to NOGRA
- Track 024° to AMBLE
- **Cross** AMBLE AT or ABV 8000FT
- From AMBLE turn RIGHT, track 030° to DEBAY
- From DEBAY turn LEFT

FOR CORAL

- Track 360° to CORAL

FOR TRIKI

- Track 014° to TRIKI