

**STANDARD INSTRUMENT DEPARTURES (SID)
BRISBANE TWO DEPARTURE (RADAR) - ALL RUNWAYS
BRISBANE, QLD (YBBN)**

12 NOV 2015

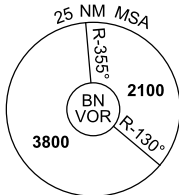
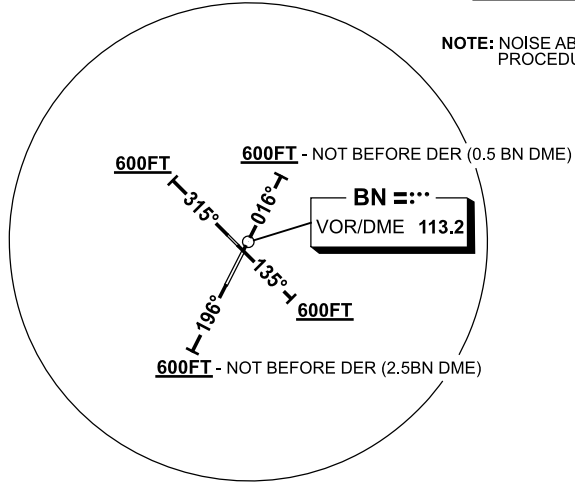
ATIS 113.2 125.5	ACD 118.6	SMC 121.7	TWR 120.5	APP/DEP 118.45 128.3 124.7 125.6	Bearings are Magnetic Elevations in FEET AMSL
---------------------	--------------	--------------	--------------	-------------------------------------	--

NOT TO SCALE



**SPEED
MAX IAS 250KT
BELOW 10,000FT**

**NOTE: NOISE ABATEMENT
PROCEDURES APPLY**



GNSS permitted in lieu of DME
Reference waypoint BN VOR

10 NM MSA 2500

GRAD 3.3%

BRISBANE TWO DEPARTURE (RADAR)

RWY 01

- Track 016°
- At 600FT but not before DER (0.5 BN DME) turn to assigned heading
- When directed, contact Departures for radar vectors

RWY 19

- Track 196°
- At 600FT but not before DER (2.5BN DME) turn to assigned heading
- When directed, contact Departures for radar vectors

RWY 32

- Track 315°
- At 600FT turn to assigned heading
- When directed, contact Departures for radar vectors

RWY 14

- Track 135°
- At 600FT turn to assigned heading
- When directed, contact Departures for radar vectors

COMMUNICATIONS FAILURE PROCEDURE

On recognition of communications failure

- Squawk 7600
- Maintain last assigned vector for two minutes, and
- CLIMB IF NECESSARY TO MINIMUM SAFE ALTITUDE, to maintain terrain clearance, then
- proceed in accordance with the latest ATC route clearance acknowledged.

Changes: MSA.

BBNDP01-145