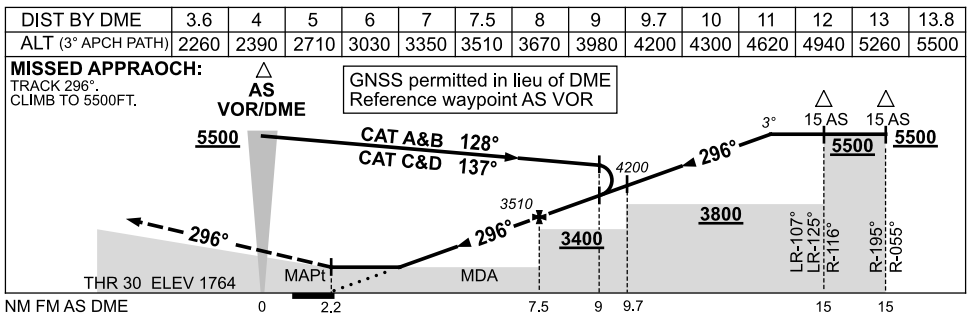
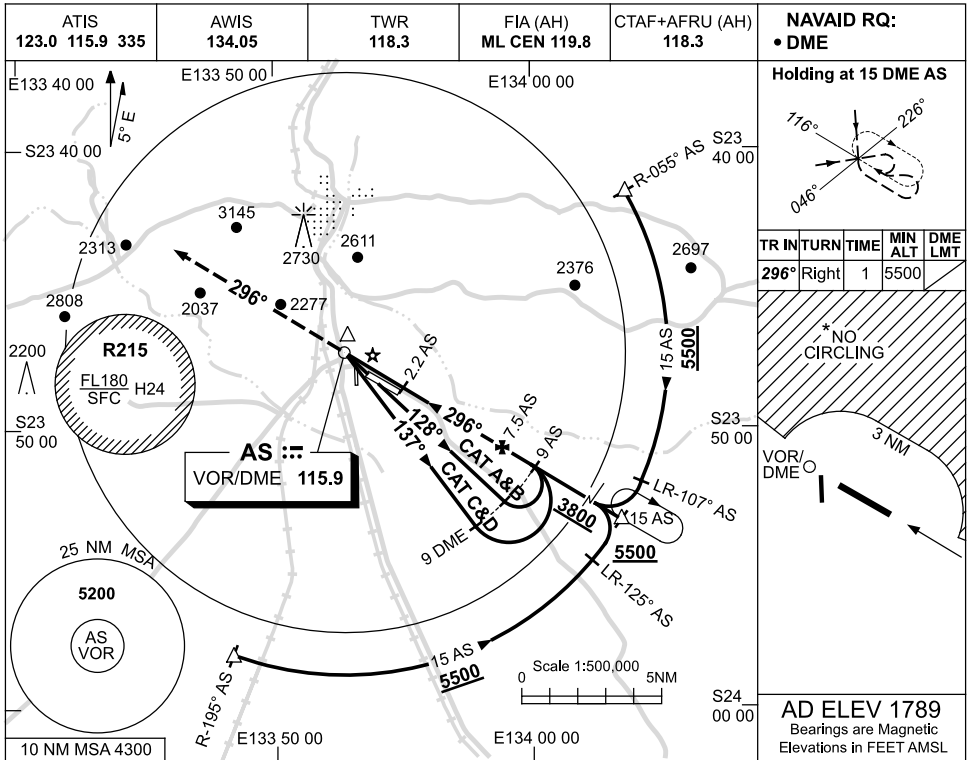


USE QNH

VOR RWY 30

18 AUG 2016

ALICE SPRINGS, NT (YBAS)



NOTES

CATEGORY	A	B	C	D
S-I VOR/DME	2260 (496-2.8)			
CIRCLING*	2570 (781-2.4)		2990 (1201-4.0) 2990 (1201-5.0)	
ALTERNATE*	(1281-4.4)		(1701-6.0) (1701-7.0)	

1. MAX IAS: INITIAL : 210KT.
- * 2. SPECIAL ALTN MNM 800/4.0KM.
- * 3. NO CIRCLING N OF RWY 12/30 BEYOND 3NM.

Changes: SPECIAL ALTN MNM.

BASV002-148