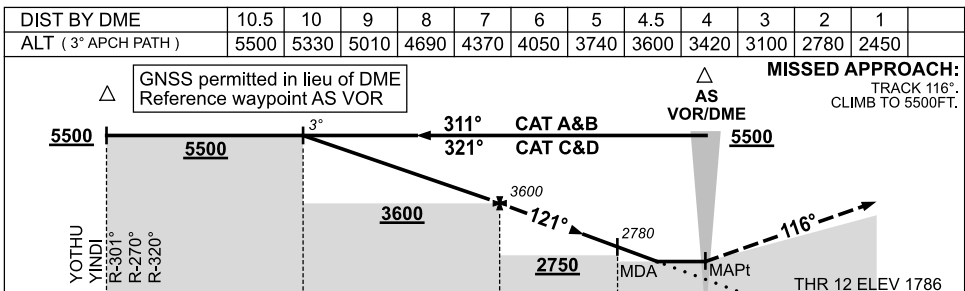
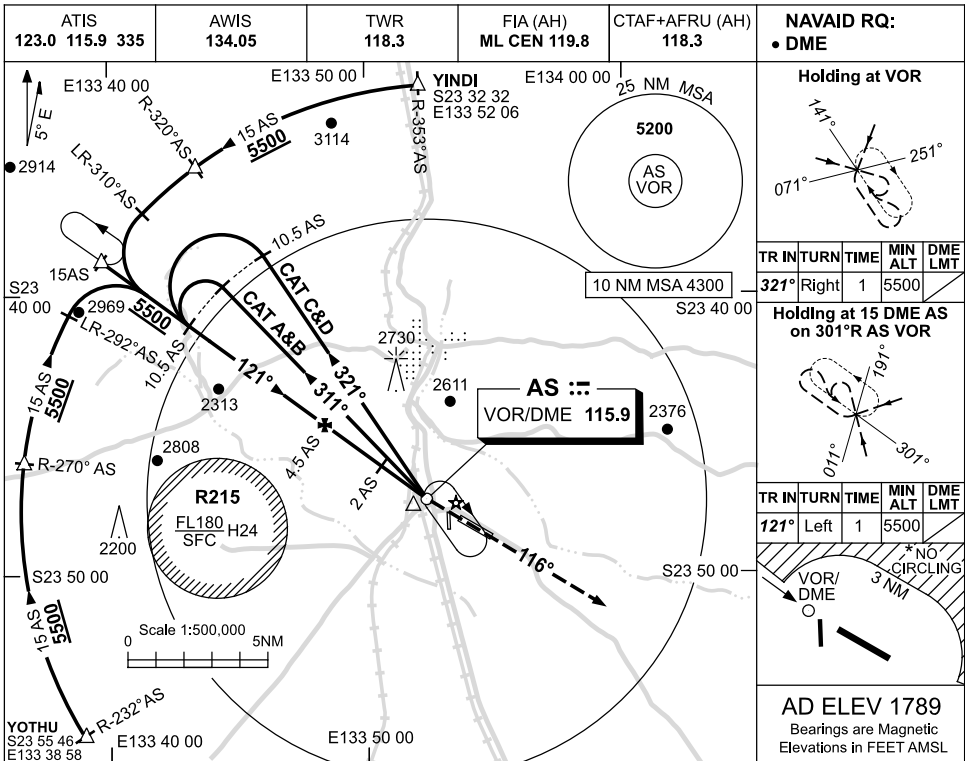


USE QNH

VOR RWY 12

ALICE SPRINGS, NT (YBAS)

18 AUG 2016



CATEGORY	A	B	C	D
S-I VOR/DME	2450 (661-3.8)			
CIRCLING *	2570 (781-2.4)	2990 (1201-4.0)	2990 (1201-5.0)	
ALTERNATE ‡	(1281-4.4)	(1701-6.0)	(1701-7.0)	

NOTES

- MAX IAS:
INITIAL : 210KT.
HOLDING: 185KT.
HLDG NOT ABOVE FL120.
- SPECIAL ALTN MNM 800/4.0KM.
- NO CIRCLING N OF RWY 12/30 BEYOND 3NM.

Changes: SPECIAL ALTN MNM.

BASV001-148