

USE QNH

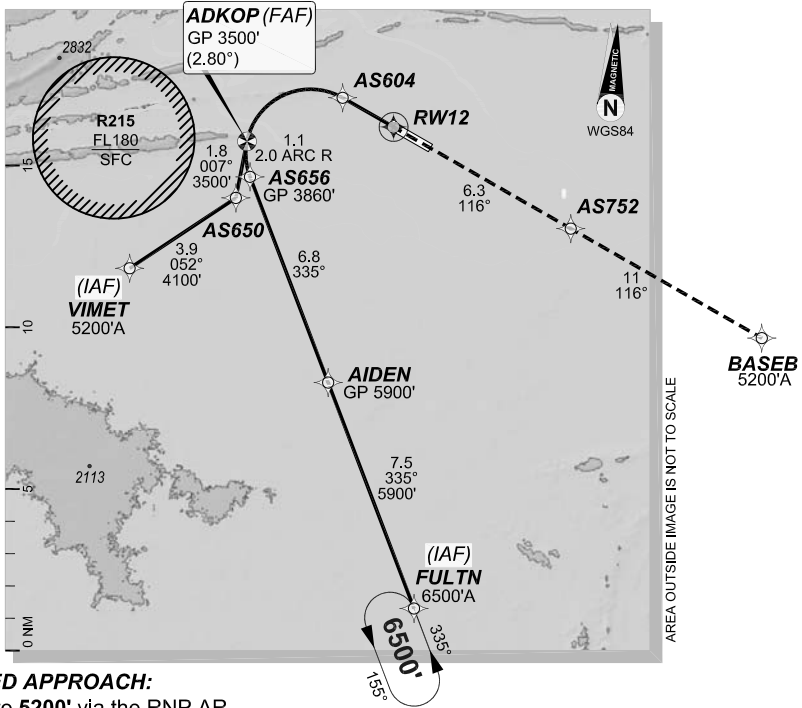
RNP P RWY 12 (AR)

1 DEC 2022

ALICE SPRINGS, NT (YBAS)

GE PROPRIETARY INFORMATION

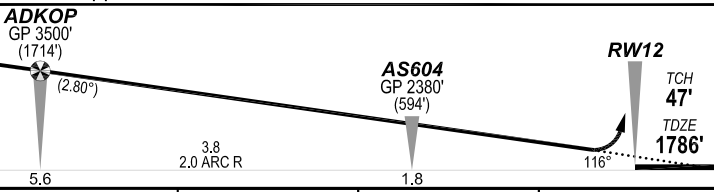
ATIS 123.0 115.9 335			AWIS 134.05		TWR 118.3	FIA (AH) ML CEN 119.8	CTAF + AFRU (AH) 118.3
RNP AR RNP P 12		Apt Elev. 1789' TDZE 1786'	ADKOP (FAF) GP 3500' (2.80°)		Trans Level FL110		



AREA OUTSIDE IMAGE IS NOT TO SCALE

MISSED APPROACH:

Climb to **5200'** via the RNP AR
Missed Approach track to **BASEB**.



NOTES:

- YBAS ACT QNH RQ.
- Minimum MAP gradient (All Engines) 3.0% to 5200FT.
- APCH Path does not coincide with PAPI glide path 3°.

ADKOP GP 3500' (1714') (2.80°)		AS604 GP 2380' (594')		RWY12 TCH 47' TDZE 1786'	
5.6		3.8 2.0 ARC R		1.8	
				RNP 0.30	
				DA(H) 2104' (318')	
				HIALS OUT	
C	C	C	C	800 m	1700 m



10 NM MSA 4300

FOR CASA APPROVED OPERATORS ONLY

Changes: PROC NAME, RNAV (RNP) TO RNP AR.

BASGN04-173

DO NOT USE FOR NAVIGATION

Prepared by GE Aviation



202208021124COPYRIGHT 2022 NAVERUS, INC. USA