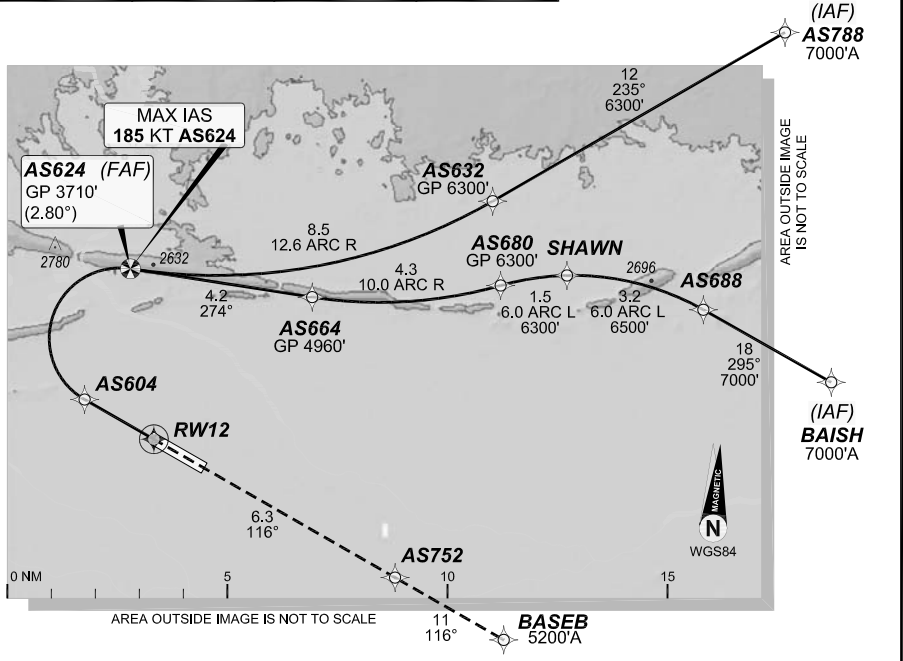


1 DEC 2022

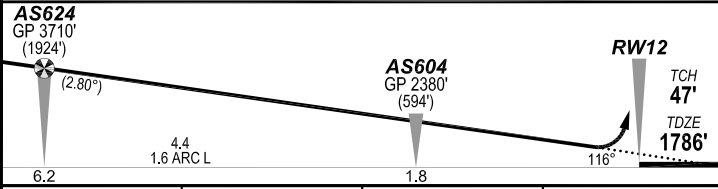
ALICE SPRINGS, NT (YBAS)

GE PROPRIETARY INFORMATION

ATIS 123.0 115.9 335			AWIS 134.05		TWR 118.3	FIA (AH) ML CEN 119.8	CTAF + AFRU (AH) 118.3
RNP AR RNV M 12		Apt Elev. 1789' TDZE 1786'	AS624 (FAF) GP 3710' (2.80°)		Trans Level FL110		

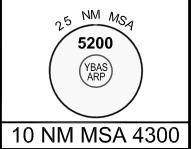


MISSED APPROACH:
Climb to **5200'** via the RNP AR
Missed Approach track to **BASEB**.



NOTES:
- YBAS ACT QNH RQ.
- Minimum MAP gradient (All Engines) 3.0% to 5200FT.
-APCH Path does not coincide with PAPI glide path 3°.

AS624 GP 3710' (1924') (2.80°)		AS604 GP 2380' (594')		RWY 12 TCH 47' TDZE 1786'	
6.2		4.4 1.6 ARC L		1.8	
				RNP 0.30	
				DA(H) 2104' (318')	
				HIALS OUT	
C	C	C	C	800 m	1700 m



FOR CASA APPROVED OPERATORS ONLY

Changes: PROC NAME, SPEED NOTE AS624, RNAV (RNP) TO RNP AR. BASGN03-173

DO NOT USE FOR NAVIGATION
Prepared by GE Aviation

