

24 MAR 2022

GE PROPRIETARY INFORMATION

Apt Elev 1789'	Trans ALT 10000'	ATIS 123.0 115.9 335	AWIS 134.05	TWR 118.3	FIA (AH) ML CEN 119.8	CTAF + AFRU (AH) 118.3
OCTAV FIVE RNAV (RNP) DEPARTURE RNP 0.30 (OCTAV5.OCTAV) RWY 30		Minimum climb gradient (All Engines) 11.6% to 2800FT.				

TAKE-OFF:

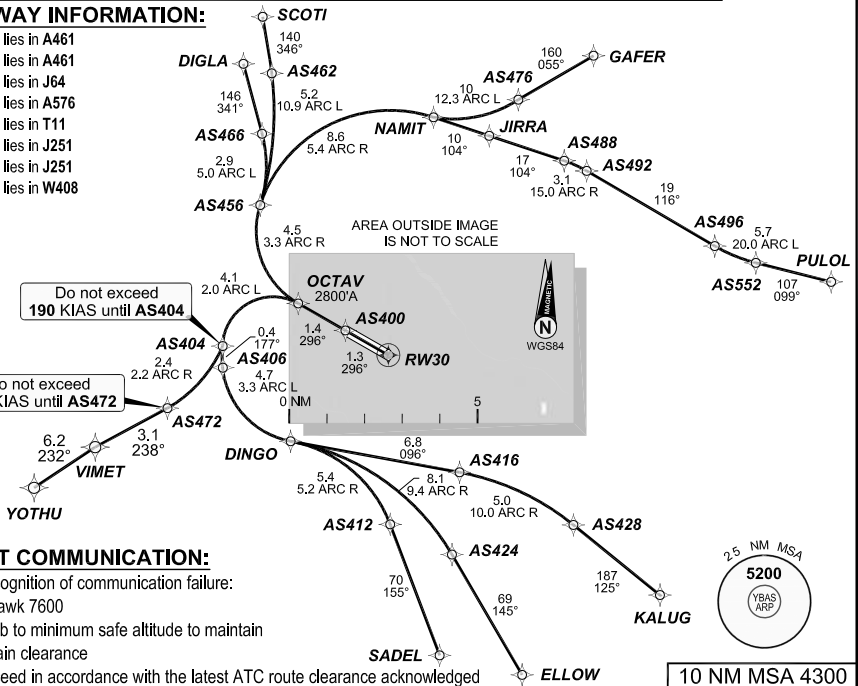
RWY 30: Fly the RNAV (RNP) track to **OCTAV** and cross **OCTAV** at or above **2800'**. Thence:

TRANSITIONS:

- (OCTAV5.DIGLA): Fly the RNAV (RNP) track to **DIGLA**.
- (OCTAV5.ELLOW): Fly the RNAV (RNP) track to **ELLOW**. Do not exceed **190 KIAS** until **AS404**.
- (OCTAV5.GAFER): Fly the RNAV (RNP) track to **GAFER**.
- (OCTAV5.KALUG): Fly the RNAV (RNP) track to **KALUG**. Do not exceed **190 KIAS** until **AS404**.
- (OCTAV5.PULOL): Fly the RNAV (RNP) track to **PULOL**.
- (OCTAV5.SADEL): Fly the RNAV (RNP) track to **SADEL**. Do not exceed **190 KIAS** until **AS404**.
- (OCTAV5.SCOTI): Fly the RNAV (RNP) track to **SCOTI**.
- (OCTAV5.YOTHU): Fly the RNAV (RNP) track to **YOTHU**. Do not exceed **190 KIAS** until **AS404**. Do not exceed **200 KIAS** until **AS472**.

AIRWAY INFORMATION:

- AS466 lies in A461
- AS424 lies in A461
- AS476 lies in J64
- AS428 lies in A576
- AS552 lies in T11
- AS412 lies in J251
- AS462 lies in J251
- VIMET lies in W408



LOST COMMUNICATION:

On recognition of communication failure:

- Squawk 7600
- Climb to minimum safe altitude to maintain terrain clearance
- Proceed in accordance with the latest ATC route clearance acknowledged

10 NM MSA 4300

**FOR CASA APPROVED
OPERATORS ONLY**

2021111714: COPYRIGHT 2021 MAVERUS, INC. USA

Changes: From SUP H104/21, Procedure up-numbered, AS700 changed to VIMET, AS470 changed to AS472, Added climb gradient. BASDP05-170

DO NOT USE FOR NAVIGATION

Prepared by GE Aviation

