

24 MAR 2022

GE PROPRIETARY INFORMATION

Apt Elev 1789'	Trans ALT 10000'	ATIS 123.0 115.9 335	AWIS 134.05	TWR 118.3	FIA (AH) ML CEN 119.8	CTAF + AFRU (AH) 118.3
--------------------------	----------------------------	--------------------------------	-----------------------	---------------------	---------------------------------	----------------------------------

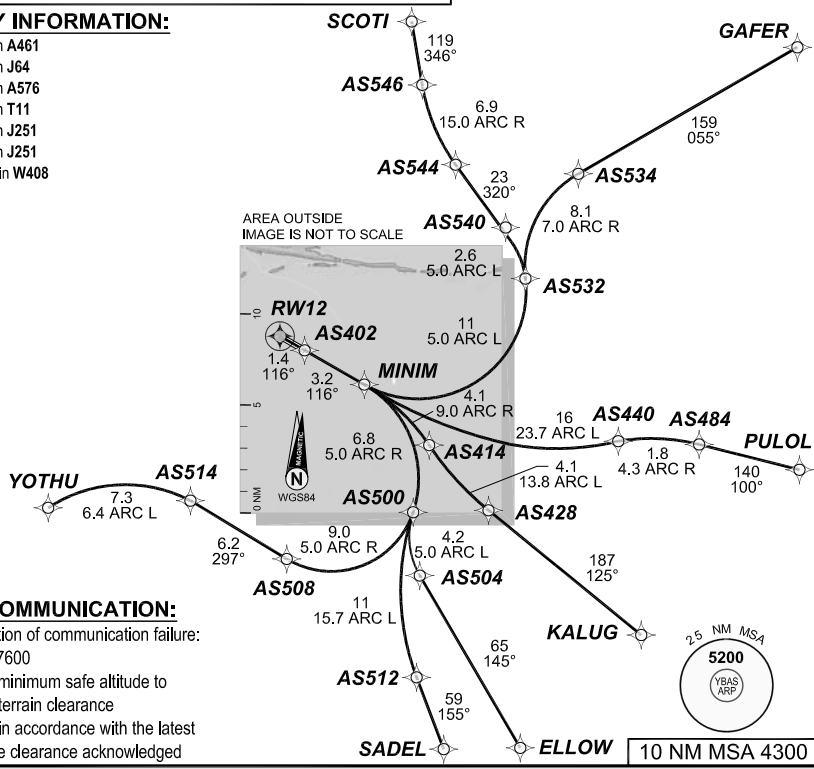
MINIM TWO RNAV (RNP) DEPARTURE RNP 0.30 (MINIM2,MINIM) RWY 12	Minimum climb gradient (All Engines) 5.4% to 2800FT.

TAKE-OFF:
RWY 12: Fly the RNAV (RNP) track to **MINIM**. Thence:

TRANSITIONS:
(MINIM2.ELLOW): Fly the RNAV (RNP) track to **ELLOW**.
(MINIM2.GAFER): Fly the RNAV (RNP) track to **GAFER**.
(MINIM2.KALUG): Fly the RNAV (RNP) track to **KALUG**.
(MINIM2.PULOL): Fly the RNAV (RNP) track to **PULOL**.
(MINIM2.SADEL): Fly the RNAV (RNP) track to **SADEL**.
(MINIM2.SCOTI): Fly the RNAV (RNP) track to **SCOTI**.
(MINIM2.YOTHU): Fly the RNAV (RNP) track to **YOTHU**.

AIRWAY INFORMATION:

- AS504 lies in A461
- AS534 lies in J64
- AS428 lies in A576
- AS484 lies in T11
- AS512 lies in J251
- AS546 lies in J251
- YOTHU lies in W408



LOST COMMUNICATION:
On recognition of communication failure:

- Squawk 7600
- Climb to minimum safe altitude to maintain terrain clearance
- Proceed in accordance with the latest ATC route clearance acknowledged

10 NM MSA 4300

FOR CASA APPROVED OPERATORS ONLY

20211121655COPYRIGHT 2021 NAVERUS, INC. USA

Changes: From SUP H104/21, Added climb gradient.

BASDP04-170

DO NOT USE FOR NAVIGATION
Prepared by GE Aviation

