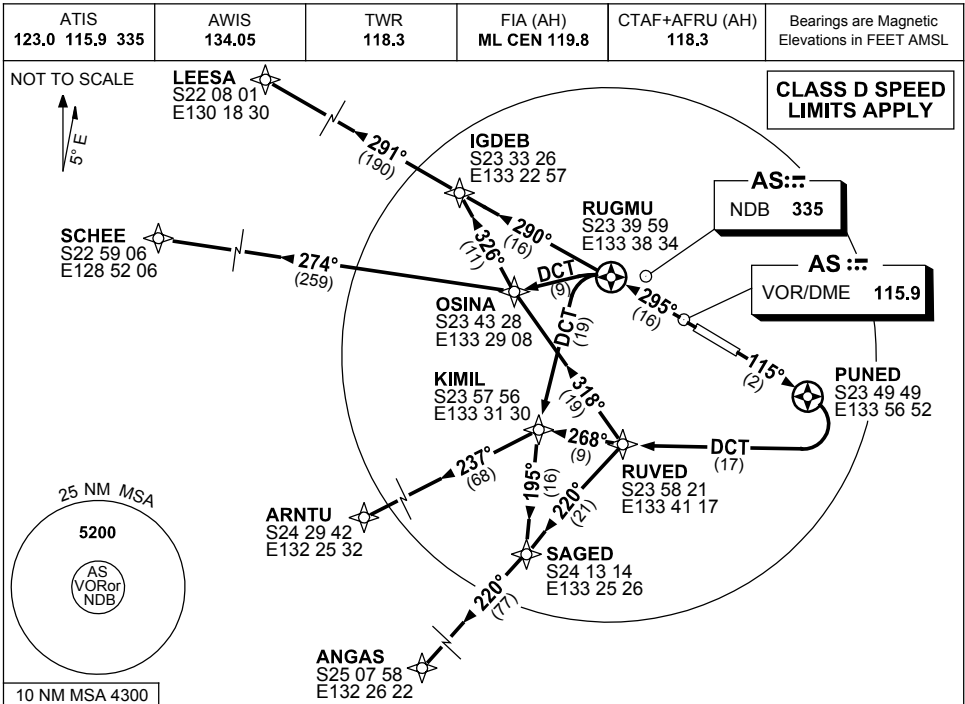


**STANDARD INSTRUMENT DEPARTURES (SID)
RWY 12/30 WEST (RNAV)
ALICE SPRINGS, NT (YBAS)**

9 NOV 2017

Bearings are Magnetic
Elevations in FEET AMSL



<p>ANGAS THREE DEPARTURE</p> <p>SCHEE TWO DEPARTURE</p> <p>ARNTU THREE DEPARTURE</p> <p>LEESA THREE DEPARTURE</p> <p>RWY 30 GRAD 3.9% TO 3300FT thence 3.3%</p> <ul style="list-style-type: none"> Track 295° to RUGMU <p>FROM RUGMU</p> <p>For LEESA</p> <ul style="list-style-type: none"> Track 290° to IGDEB Track 291° to LEESA, thence as cleared <p>For ARNTU</p> <ul style="list-style-type: none"> Turn LEFT, track DCT to KIMIL Turn RIGHT, track 237° to ARNTU, thence as cleared <p>For ANGAS</p> <ul style="list-style-type: none"> Turn LEFT, track DCT to KIMIL, Track 195° to SAGED, Turn RIGHT, track 220° to ANGAS, thence as cleared <p>For SCHEE</p> <ul style="list-style-type: none"> Turn LEFT, track DCT to OSINA Turn RIGHT, track 274° to SCHEE, thence as cleared. 	<p>RWY 12 GRAD 3.3%</p> <ul style="list-style-type: none"> Track 115° to PUNED Turn RIGHT, track DCT to RUVED <p>FROM RUVED</p> <p>For ANGAS</p> <ul style="list-style-type: none"> Turn LEFT, track 220° to SAGED Track 220° to ANGAS, thence as cleared <p>For ARNTU</p> <ul style="list-style-type: none"> Track 268° to KIMIL Turn LEFT, track 237° to ARNTU, thence as cleared <p>For LEESA</p> <ul style="list-style-type: none"> Turn RIGHT, track 318° to OSINA Track 326° to IGDEB, Turn LEFT, track 291° to LEESA, thence as cleared <p>For SCHEE</p> <ul style="list-style-type: none"> Turn RIGHT, track 318° to OSINA Turn LEFT, track 274° to SCHEE, thence as cleared.
---	--

Changes: SPEED REST.

BASDP03-153