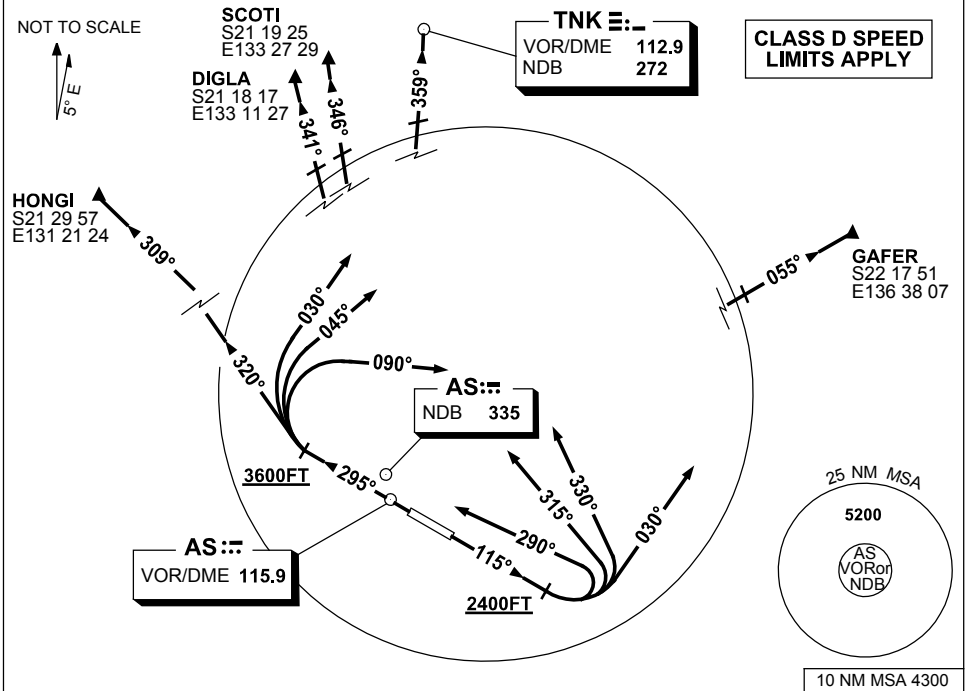


**STANDARD INSTRUMENT DEPARTURES (SID)
RWY 12/30 NORTH
ALICE SPRINGS, NT (YBAS)**

9 NOV 2017

| | | | | | |
|-------------------------|----------------|--------------|--------------------------|-------------------------|--|
| ATIS 123.0 115.9 335 | AWIS 134.05 | TWR 118.3 | FIA (AH) ML CEN 119.8 | CTAF+AFRU (AH) 118.3 | Bearings are Magnetic Elevations in FEET AMSL |
|-------------------------|----------------|--------------|--------------------------|-------------------------|--|



DIGLA TWO DEPARTURE
SCOTI TWO DEPARTURE
TENNANT CREEK (TNK) TWO DEPARTURE

GAFER TWO DEPARTURE
HONGI TWO DEPARTURE

- RWY 30**
 GRAD 3.8% TO 3600FT THENCE 3.3%
- Track 295°
 - At or ABV 3600FT but not before abeam AS VOR or AS NDB turn RIGHT
- For HONGI
- Track 320°
 - Intercept cleared route
- For DIGLA and SCOTI
- Track 030°
 - Intercept cleared route
- For TNK
- Track 045°
 - Intercept cleared route
- For GAFER
- Track 090°
 - Intercept cleared route

- RWY 12**
 GRAD 3.3%
- Track 115°
 - At or ABV 2400FT turn LEFT
- For HONGI
- Track 290°
 - Intercept cleared route
- For DIGLA and SCOTI
- Track 315°
 - Intercept cleared route
- For TNK
- Track 330°
 - Intercept cleared route
- For GAFER
- Track 030°
 - Intercept cleared route

Changes: SPEED REST.

BASDP01-153