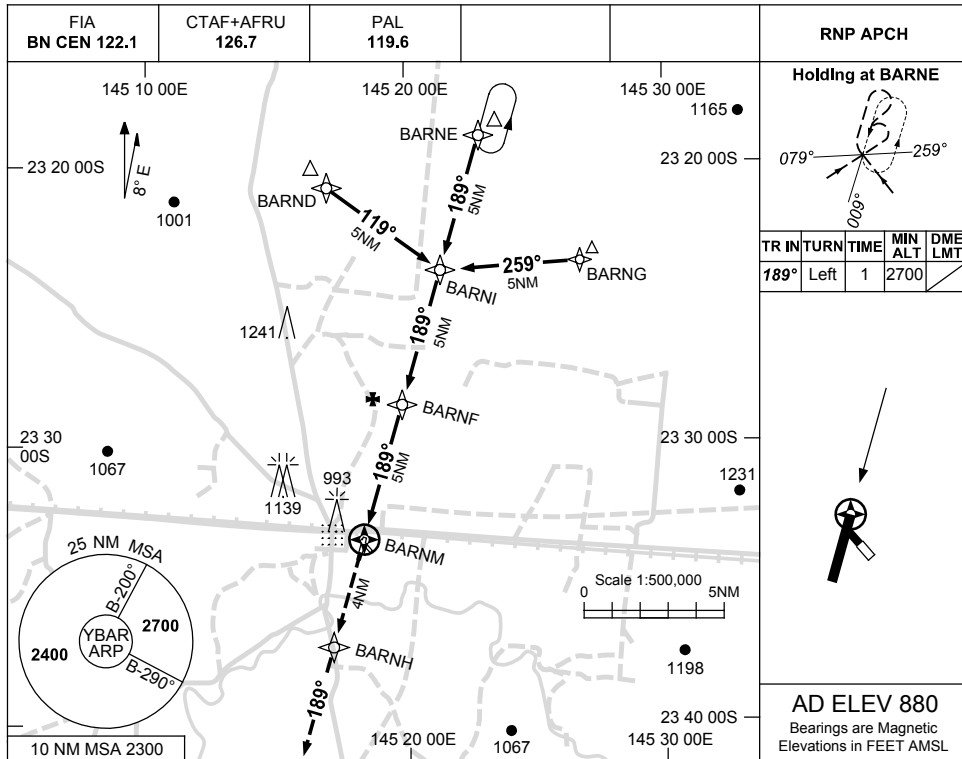


USE QNH

RNP RWY 19

30 NOV 2023

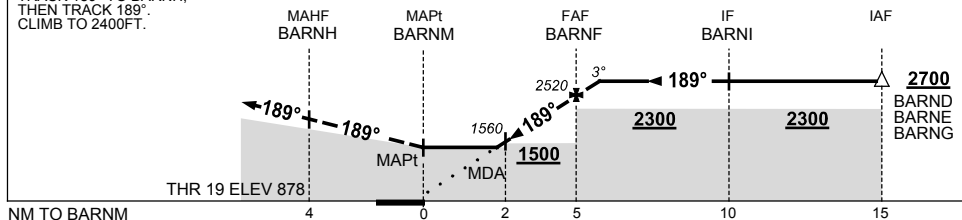
BARCALDINE, QLD (YBAR)



NM TO NEXT WPT	BARNM	1.4	2	3	4	BARNF	0.6					
ALT (3° APCH PATH)		1380	1560	1880	2200	2520	2700					

**MISSED APPROACH:**

TRACK 189° TO BARNH,  
THEN TRACK 189°.  
CLIMB TO 2400FT.



**NOTES**

1. MAX IAS:  
INITIAL : 210KT.

CATEGORY	A	B	C	D
LNAV	<b>1380 (500-2.8)</b>			<b>NOT APPLICABLE</b>
CIRCLING	<b>1480 (600-2.4)</b>	<b>1650 (770-4.0)</b>		
ALTERNATE	<b>(1100-4.4)</b>		<b>(1270-6.0)</b>	

Changes: DIST-ALT TABLE, NOTE 2 DELETED, Editorial.

BARGN02-177