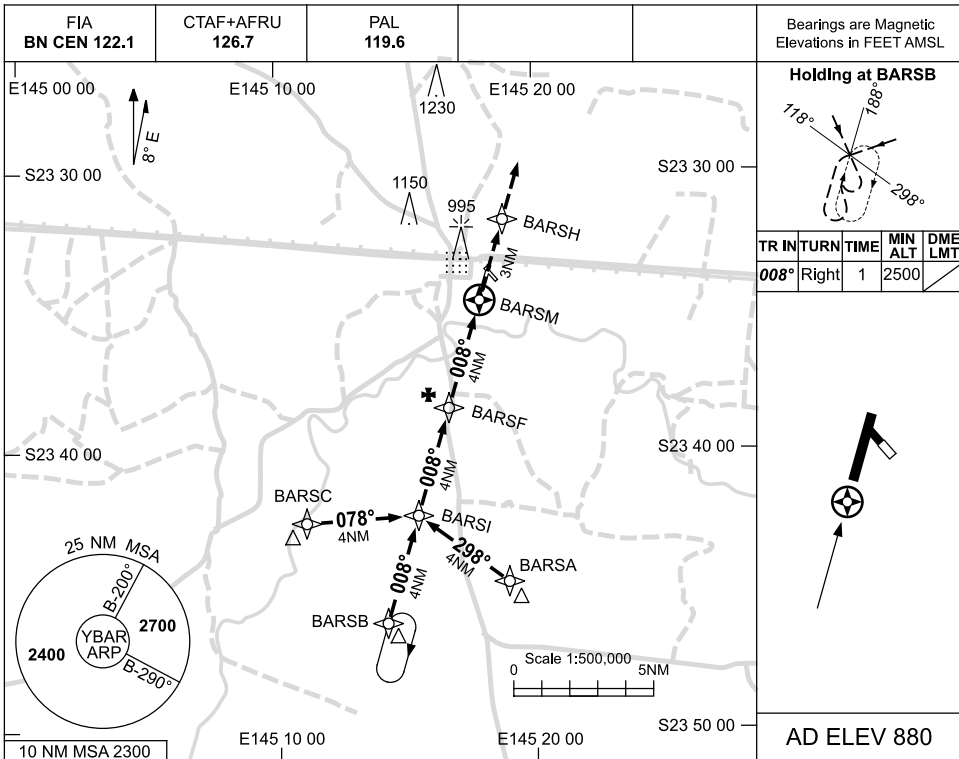


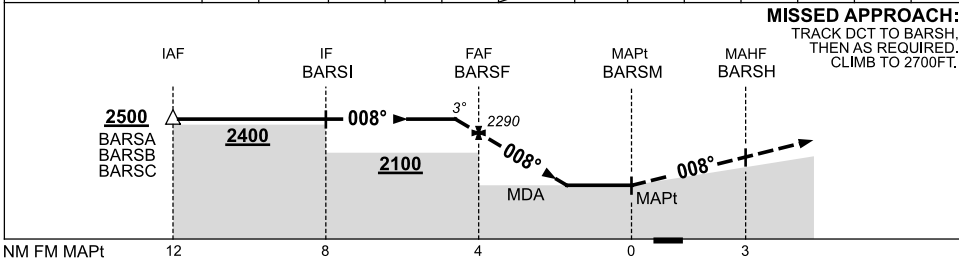
USE QNH

RNAV-S (GNSS)  
**BARCALDINE, QLD (YBAR)**

26 MAY 2016



NM TO NEXT WPT	0.7	BARSF	3	2	1.6	BARSM					
ALT (3° APCH PATH)	2500	2290	1970	1650	1520						



**NOTES**

CATEGORY	A	B	C	D
				NOT APPLICABLE
CIRCLING	1520 (640-2.4)		1650 (770-4.0)	
ALTERNATE	(1140-4.4)		(1270-6.0)	

1. MAX IAS:  
 INITIAL : 210KT.

Changes: MSA REF.

BARGN01-147