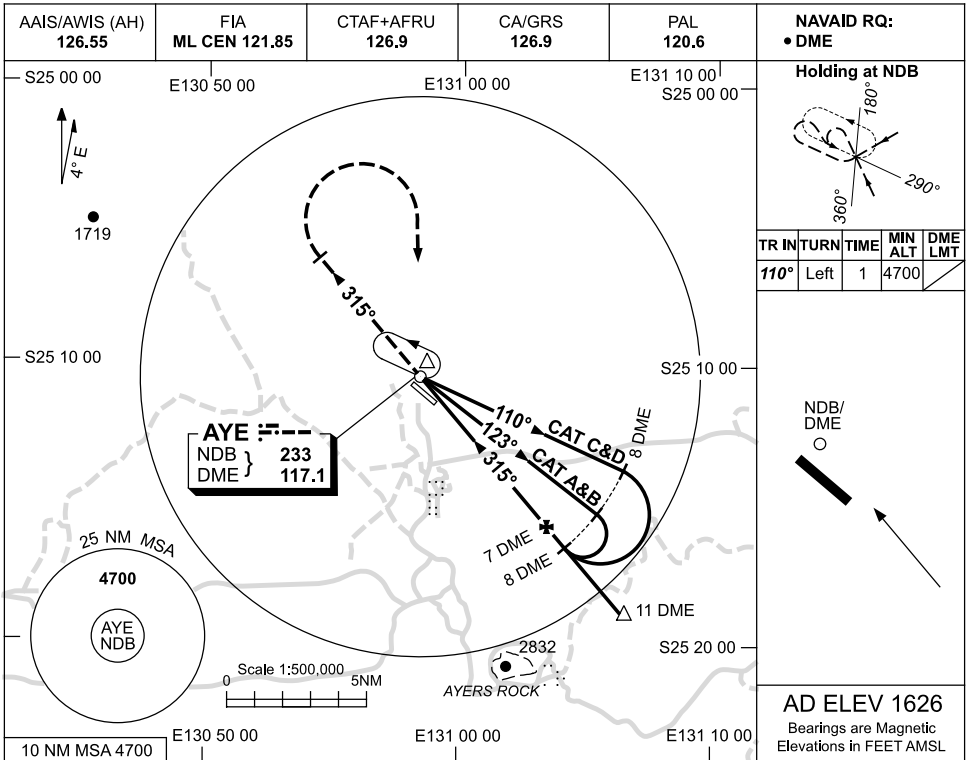


USE QNH

NDB-Z RWY 31
AYERS ROCK, NT (YAYE)

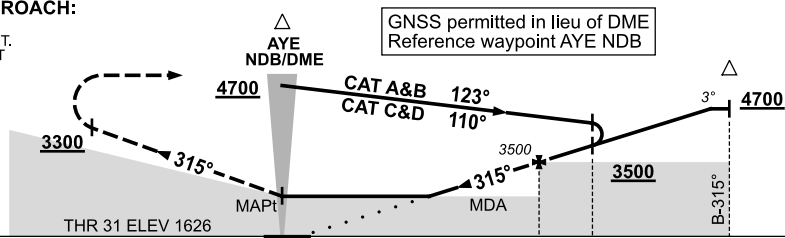
12 NOV 2015



DIST BY DME	2.9	3	4	5	6	7	8	9	10	10.8		
ALT (3° APCH PATH)	2190	2230	2550	2860	3180	3500	3820	4140	4460	4700		

MISSED APPROACH:

TRACK 315°
 CLIMB TO 4700FT.
 PASSING 3300FT.
 TURN RIGHT
 TRACK TO NDB.



NM BY DME												
NM FM THR				1.3				5.7	6.7		9.7	

NOTES

1. MAX IAS:
 INITIAL :
 CAT A&B 140KT,
 CAT C&D 210KT.

CATEGORY	A	B	C	D
S-I NDB/DME	2190 (564-3.2)			
CIRCLING	2300 (674-2.4)	2530 (904-4.0)	2530 (904-5.0)	
ALTERNATE	(1174-4.4)	(1404-6.0)	(1404-7.0)	

Changes: AWIS.

AYENB02-145