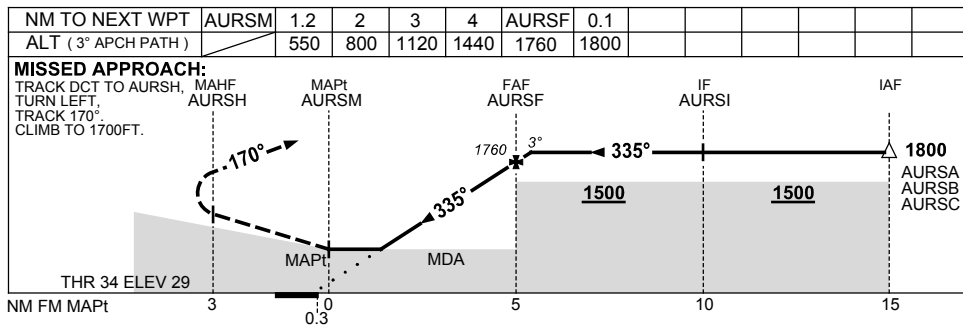
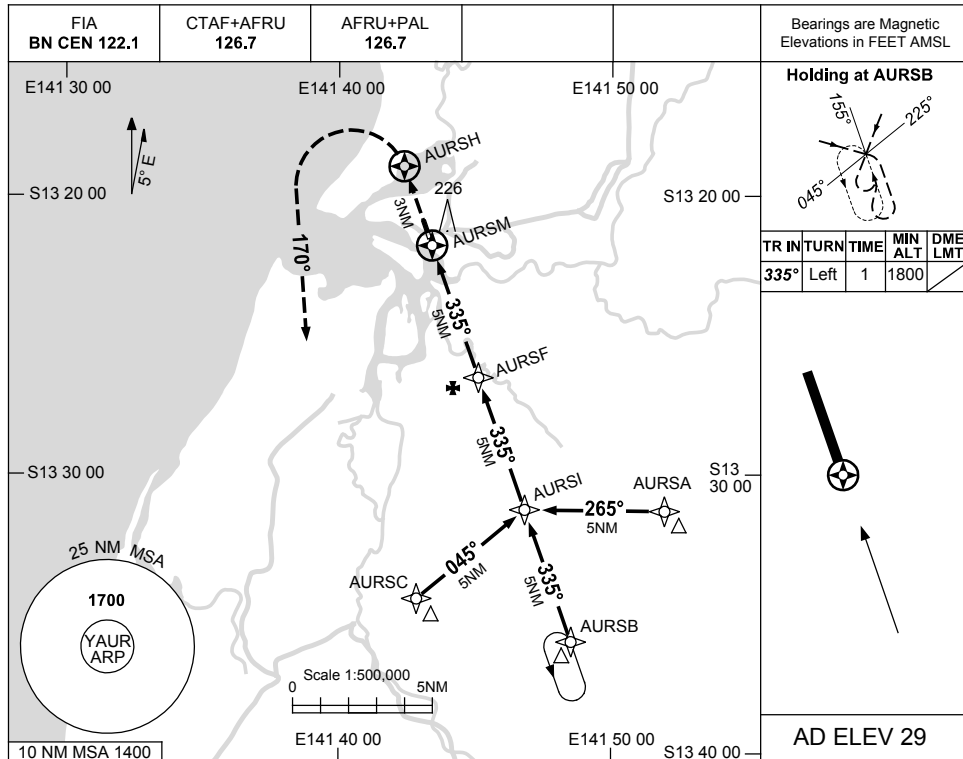


USE QNH

RNAV_(GNSS) RWY 34
AURUKUN, QLD (YAU)

2 MAR 2017



NOTES

CATEGORY	A	B	C	D
S-I GNSS	550 (521-2.9)			NOT APPLICABLE
CIRCLING	660 (631-2.4)		760 (731-4.0)	
ALTERNATE	(1131-4.4)		(1231-6.0)	

1. MAX IAS:
 INITIAL : 210KT.

Changes: S-I & CIRCLING MDA, PROFILE, HOLDING ALT, MAG VAR.

AURGN01-150

