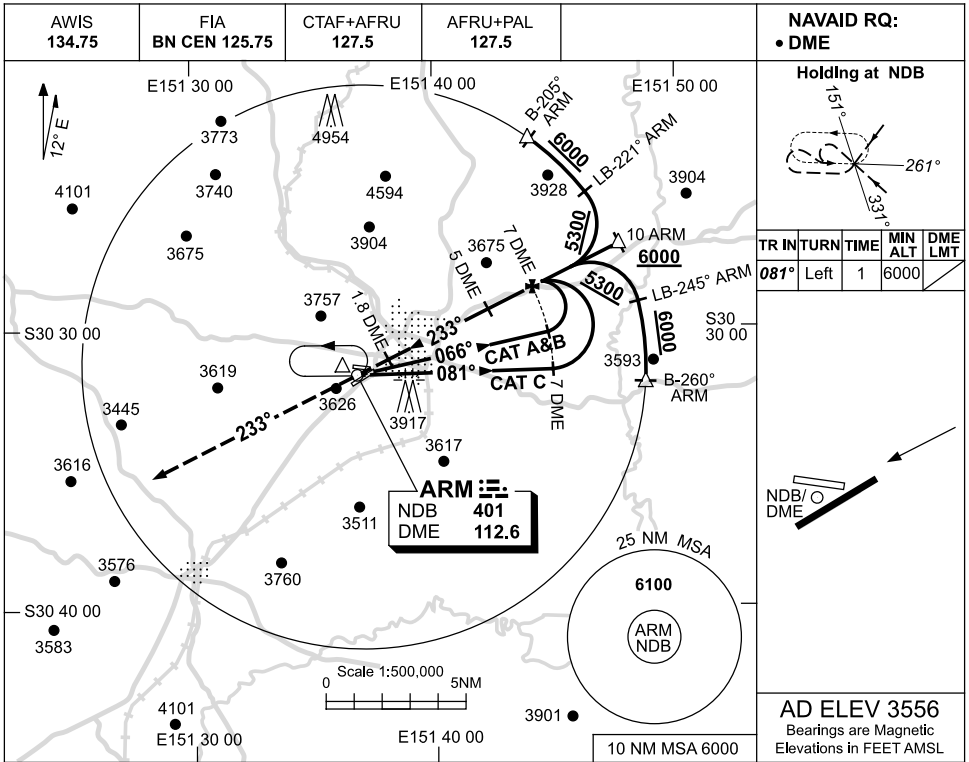


USE QNH

NDB RWY 23
ARMIDALE, NSW (YARM)

3 MAR 2016



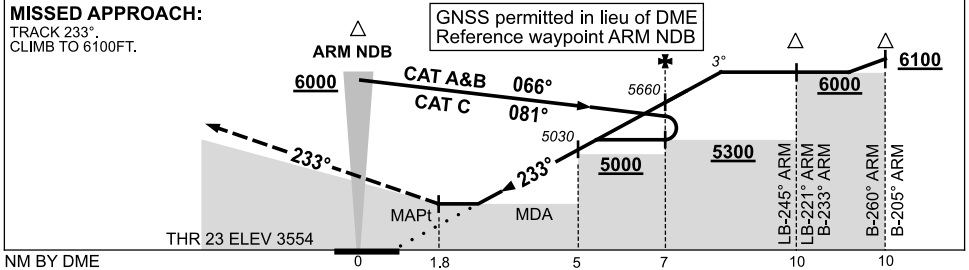
NAVAID RQ:
 • DME

Holding at NDB

TR	IN	TURN	TIME	MIN ALT	DME LMT
081°	Left	1	6000		

AD ELEV 3556
 Bearings are Magnetic
 Elevations in FEET AMSL

DIST BY DME	2.1	3	4	5	5.8	6	7	8						
ALT (3° APCH PATH)	4100	4400	4720	5030	5300	5350	5660	6000						



NOTES

CATEGORY	A	B	C	D
S-I NDB/DME	4100 (544-3.1)			NOT APPLICABLE
CIRCLING	4340 (784-2.4)	4440 (884-4.0)		
ALTERNATE	(1284-4.4)		(1384-6.0)	

1. MAX IAS: INITIAL : 210KT.

Changes: OUTBOUND TRACKS, MINIMA, PROC ALT, Editorial.

ARMNB02-146