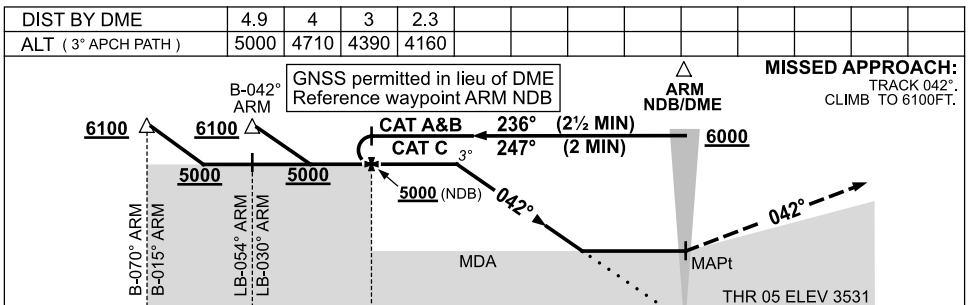
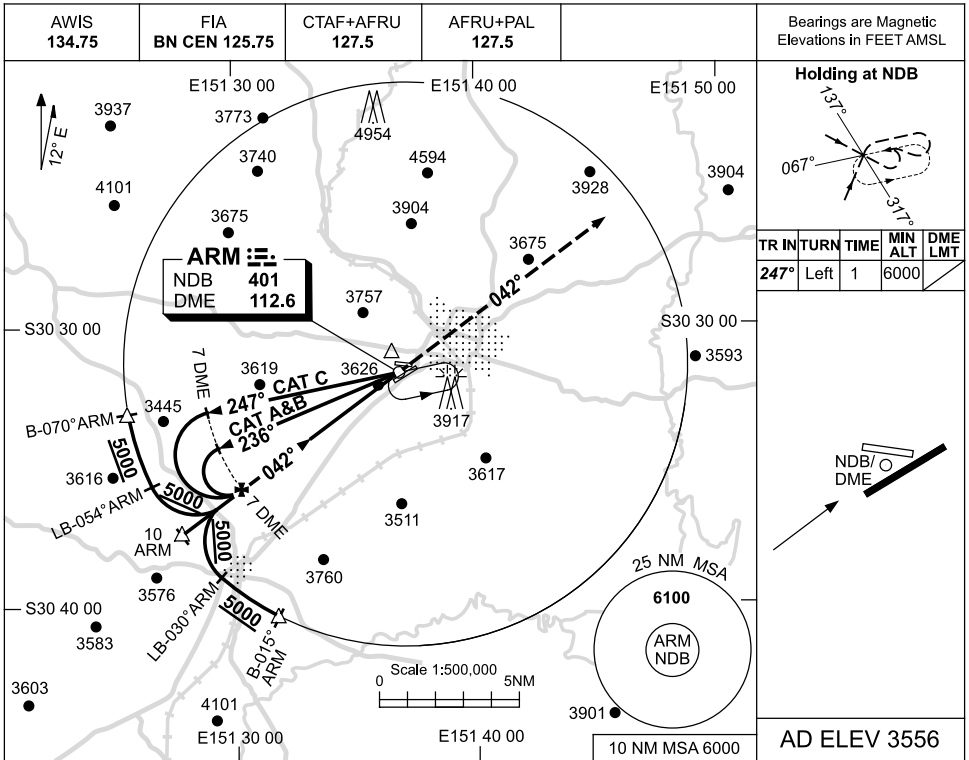


USE QNH

NDB RWY 05
ARMIDALE, NSW (YARM)

26 MAY 2016



NOTES

CATEGORY	A	B	C	D
S-I NDB	4210 (679-3.9)			NOT APPLICABLE
S-I NDB/DME	4160 (629-3.6)			
CIRCLING	4340 (784-2.4)		4440 (884-4.0)	
ALTERNATE	(1284-4.4)		(1384-6.0)	

1. MAX IAS:
 INITIAL :210KLT.

Changes: Editorial.

ARMNB01-147