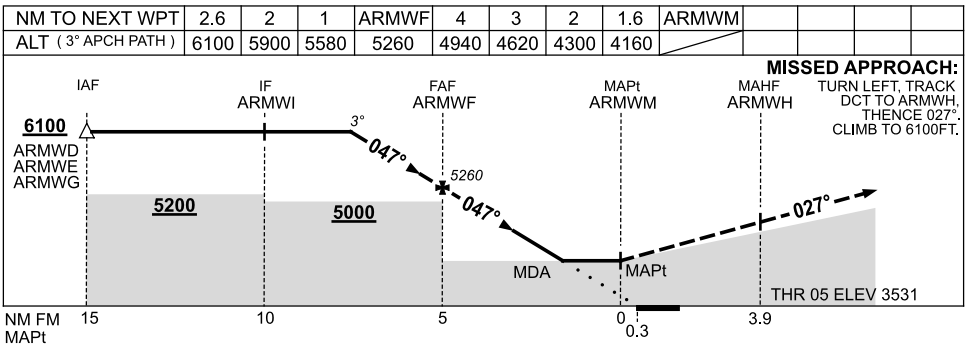
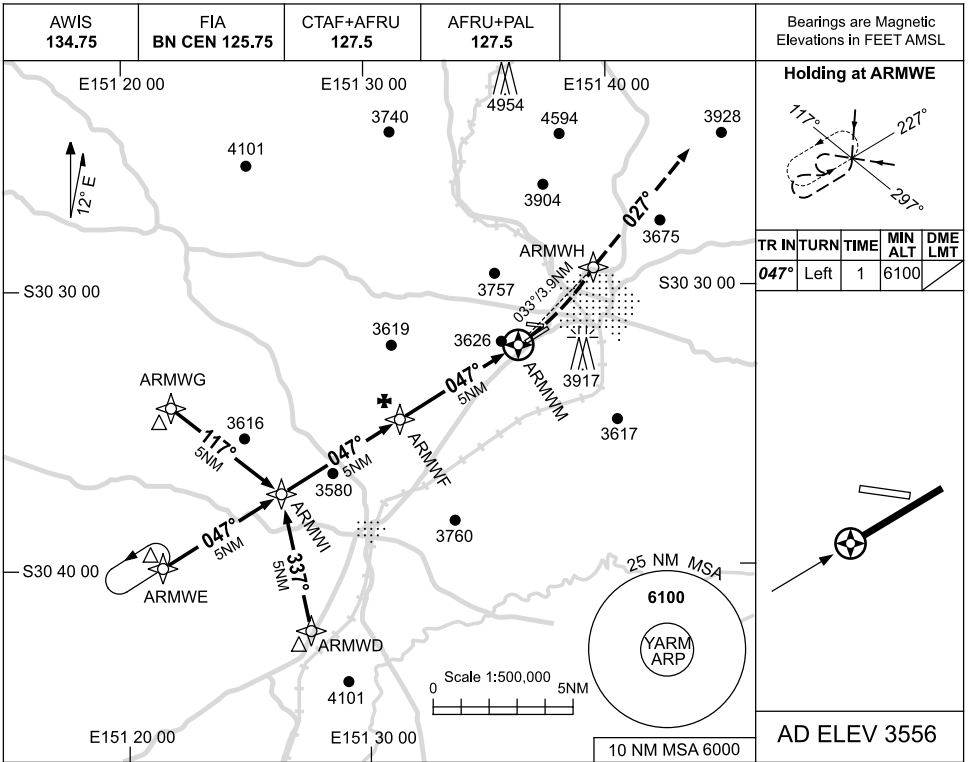


USE QNH

RNAV-Z (GNSS) RWY 05  
**ARMIDALE, NSW (YARM)**

3 MAR 2016



**NOTES**

CATEGORY	A	B	C	D
S-I GNSS	<b>4160 (629-3.6)</b>			NOT APPLICABLE
CIRCLING	<b>4340 (784-2.4)</b>		<b>4440 (884-4.0)</b>	
ALTERNATE	(1284-4.4)		(1384-6.0)	

1. MAX IAS:  
 INITIAL : 210KT.

Changes: MINIMA, MSA REF.

ARMGN02-146