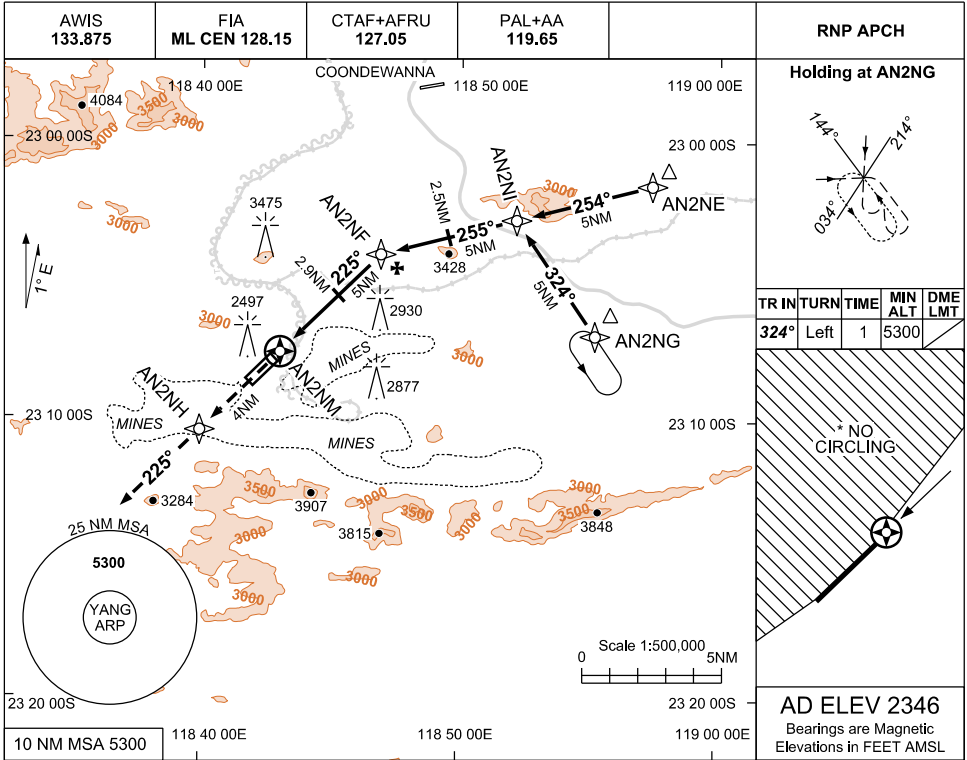


USE QNH

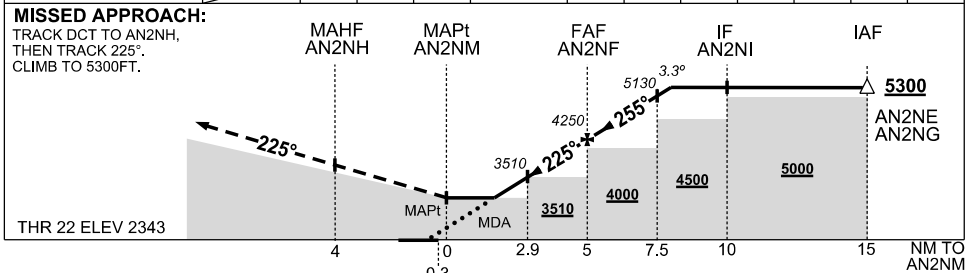
RNP RWY 22

30 NOV 2023

WEST ANGELAS, WA (YANG)



NM TO NEXT WPT	AN2NM	2.2	3	4	AN2NF	1	2	3			
ALT (3.3° APCH PATH)		3260	3550	3900	4250	4600	4950	5300			



- NOTES**
- MAX IAS : INITIAL : 210KT. HOLDING : 210KT.
  - NO CIRCLING NORTH WEST OF RWY 04/22.
  - MIN MAP GRAD 3% TO 3500FT THEN 2.5%.
  - CHECK BLASTING TIMES WITH A/D OPR
  - COLOUR:** SEE SPEC NOTICES

CATEGORY	A	B	C	D
LNAV (2.5% MAP)	3310 (964-5.0)			<b>NOT AUTHORISED</b>
# LNAV (3% MAP)	3260 (914-5.0)			
CIRCLING *	3310 (964-2.4)		NOT AUTHORISED	
ALTERNATE	(1464-4.4)		NOT APPLICABLE	

Changes: CHART TITLE, WPT IDENT, PBN SPECIFICATION BOX, EDITORIAL

ANGGN02-177