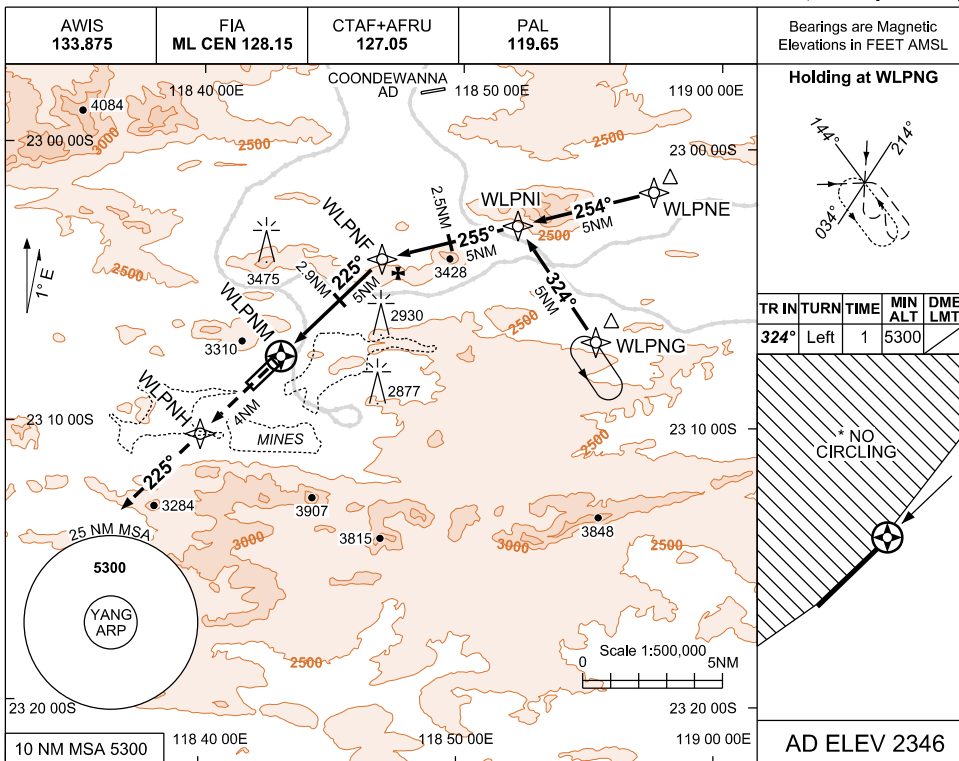


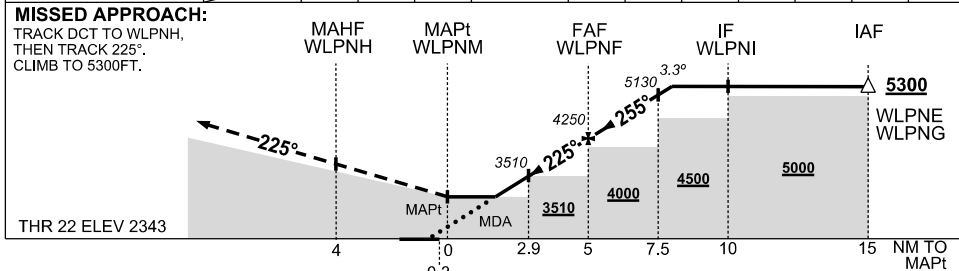
USE QNH

RNAV (GNSS) RWY 22  
WEST ANGELAS, WA (YANG)

5 NOV 2020



NM TO NEXT WPT	WLPNM	2.2	3	4	WLPNF	1	2	3			
ALT (3.3° APCH PATH)		3260	3550	3900	4250	4600	4950	5300			



- NOTES**
1. MAX IAS : INITIAL : 210KT. HOLDING : 210KT.
  2. NO CIRCLING NORTH WEST OF RWY 04/22.
  3. MIN MAP GRAD 3% TO 3500FT THEN 2.5%.
  4. CHECK BLASTING TIMES WITH A/D OPR
  5. **COLOUR:** SEE SPEC NOTICES

CATEGORY	A	B	C	D
LNAV (2.5% MAP)	3310 (964-5.0)			NOT AUTHORISED
# LNAV (3% MAP)	3260 (914-5.0)			
CIRCLING *	3310 (964-2.4)			
ALTERNATE	(1464-4.4)			

Changes: MAGVAR

ANGGN02-165