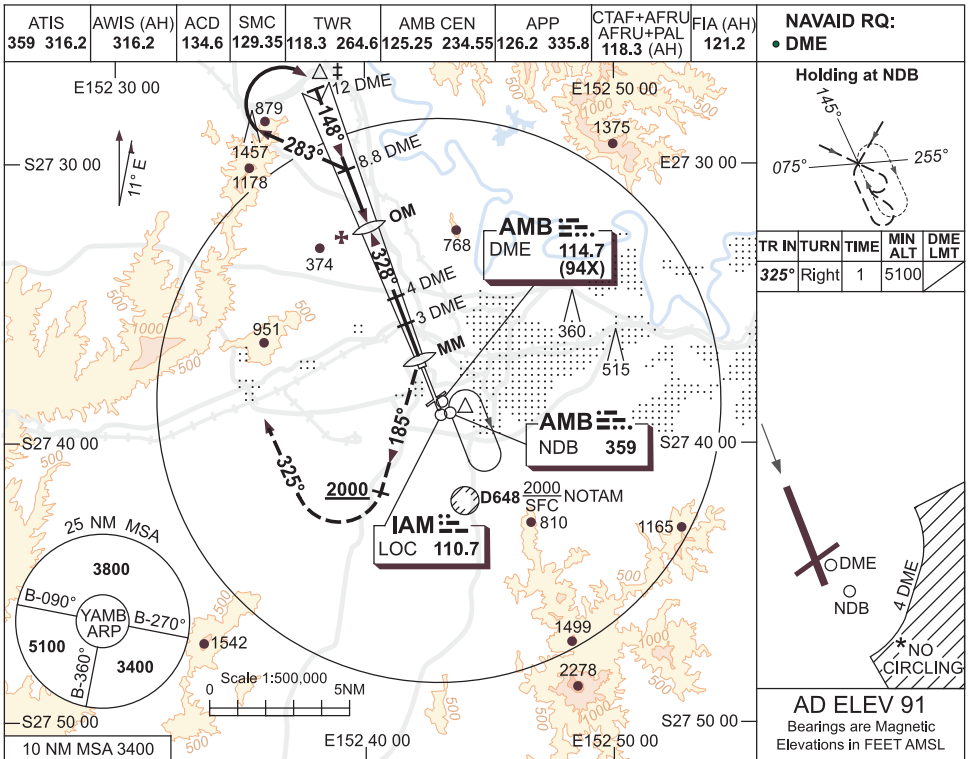


USE QNH

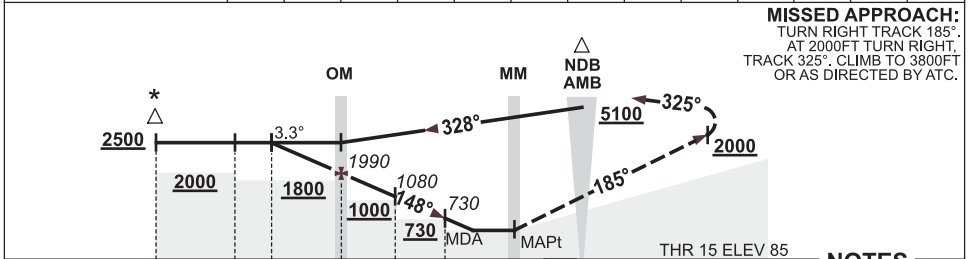
LOC-Z RWY 15

20 AUG 2015

AMBERLEY, QLD (YAMB)



DME DIST	8.1	8	7	6.6	6	5	4	3	2.8			
ALT (3.3° APCH PATH)	2500	2490	2140	1990	1780	1430	1080	730	640			



NOTES

- ACFT MAY BE RADAR VECTORED TO 12 DME IAF.
- APCH PATH ANGLE DOES NOT COINCIDE WITH ON GLIDE SLOPE INDICATION.
- NO CIRCLING SE OF RWY 15/33 AND RWY 04/22 BEYOND 4 DME.
- COLOUR : SEE SPEC NOTICES.

CATEGORY	A	B	C	D
S-I LOC/DME	640 (549-2.2)			
CIRCLING *	860 (769-2.4)		1090 (999-4.0)	
ALTERNATE	(1269-4.4)		(1959-7.0)	

Changes: S-I MINIMA, PROC ALT, MSA REF, Editorial.

AMBLZ01-144