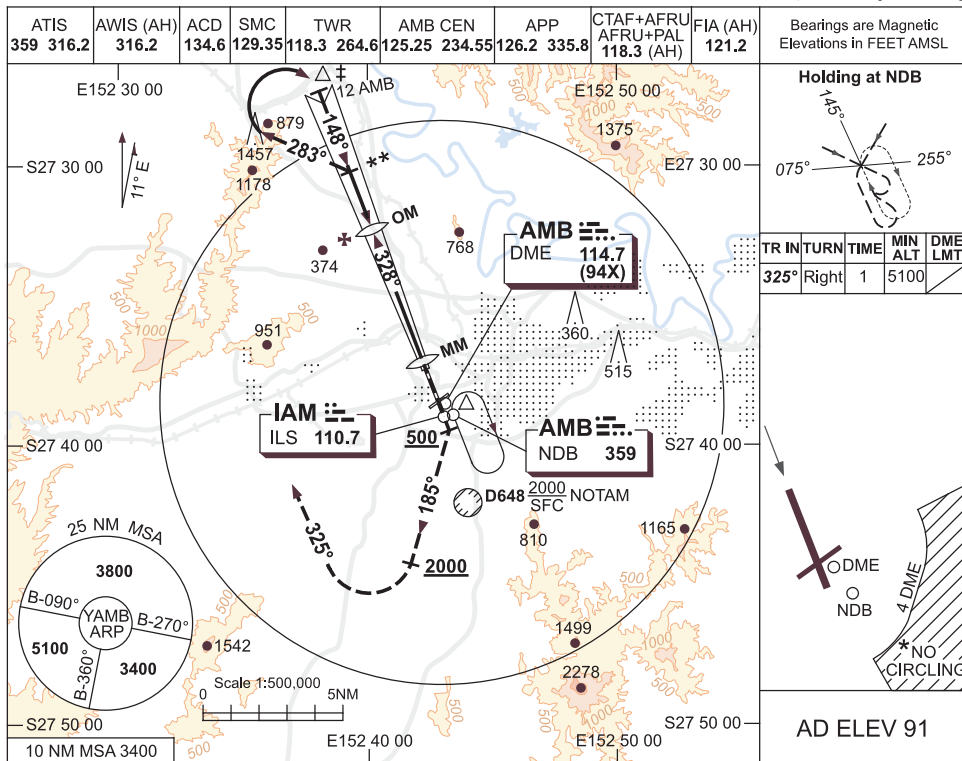


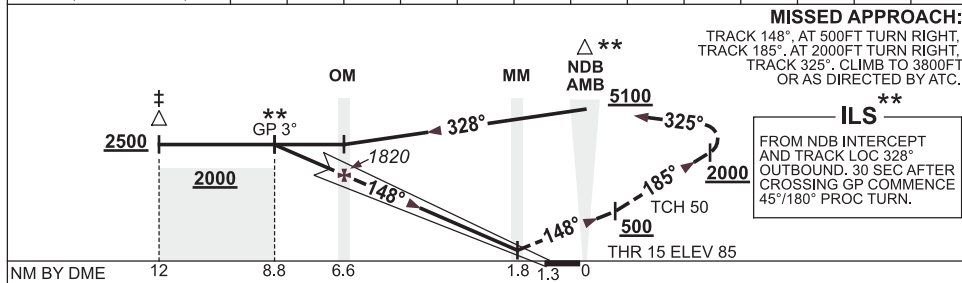
USE QNH

ILS-Z RWY 15
AMBERLEY, QLD (YAMB)

3 MAR 2016



DME DIST	8.8	8	7	6.6	6	5	4	3	2.1			
ALT (3° APCH PATH)	2500	2260	1940	1820	1630	1310	990	670	390			



CATEGORY	A	B	C	D
S-I ILS	390 (305) 1.2 (VIS 0.8 WITH ACTUAL QNH)			
CIRCLING*	860 (769-2.4)	1090 (999-4.0)	1550 (1459-5.0)	
ALTERNATE	(1269-4.4)	(1499-6.0)	(1959-7.0)	

- NOTES**
- #1. ACFT MAY BE RADAR VECTORED TO 12 DME IAF.
 - * 2. NO CIRCLING SE OF RWY 15/33 AND RWY 04/22 BEYOND 4 DME.
 - 3. COLOUR : SEE SPEC NOTICES.

Changes: Editorial.

AMBII01-146