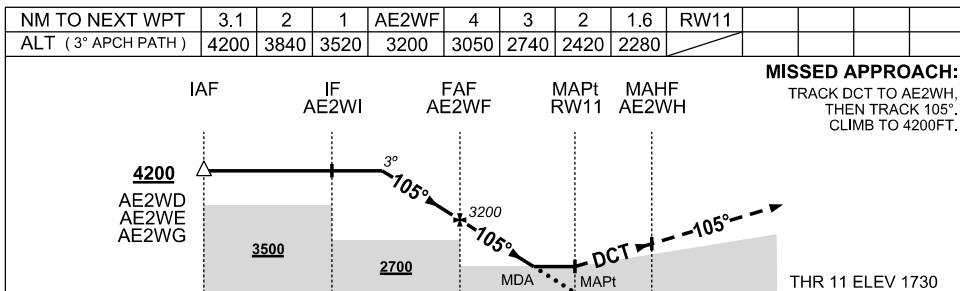
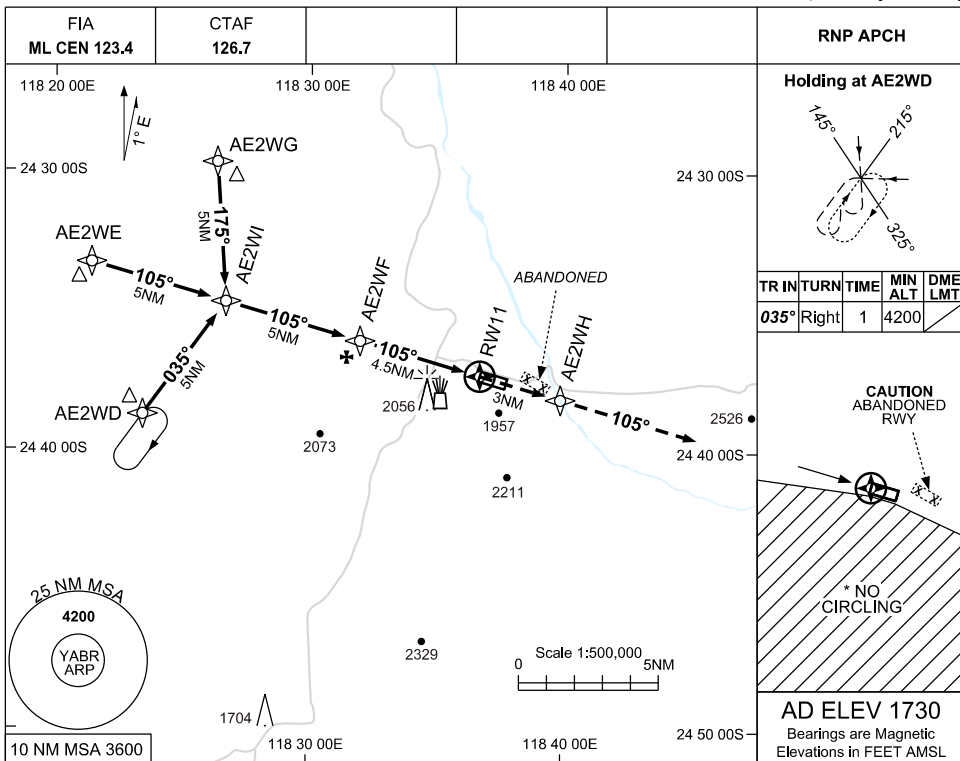


30 NOV 2023



**NOTES**

1. MAX IAS: INITIAL : 210KT
- \*2. NO CIRCLING S OF RWY 11/29
3. **CAUTION:** PLUME RISE 2NM SW
4. **CAUTION:** ABANDONED RWY 1NM E

CATEGORY	A	B	C	D
LNAV	2280 (550-3.1)			NOT AUTHORISED
* CIRCLING	2390 (660-2.4)		2490(760-4.0)	
ALTERNATE	(1160-4.4)		(1260-6.0)	

Changes: CHART TITLE, EDITORIAL

ABRGN01-177