

**AIP SUPPLEMENT
(SUP)****AIRAC****H98/23****Effective: 202401241600 UTC**

AERONAUTICAL INFORMATION SERVICE,
AIRSERVICES AUSTRALIA, GPO BOX 367,
CANBERRA ACT 2601

For **DISTRIBUTION** queries, contact:
Email: aim.editorial@airservicesaustralia.com

For **CONTENT** queries regarding this SUP, contact:
Email: ifp@airservicesaustralia.com

TOWNSVILLE/TOWNSVILLE INTL (YBTL) REVISED STANDARD INSTRUMENT DEPARTURES (SID)

1. INTRODUCTION

- 1.1 This AIP SUP cancels the Townsville/Townsville INTL (YBTL) SID - AKROM ONE (RNAV) and SID – PEWEE SIX (RNAV).
- 1.2 This AIP SUP introduces a new SID – ADNOD ONE (RNAV), which includes an AKROM transition and PEWEE transition.
- 1.3 There are no changes to waypoints or tracking.

2. IMPLEMENTATION

- 2.1 The ADNOD ONE (RNAV) SID promulgated by this AIP SUP becomes effective 202401241600 UTC.
- 2.2 YBTL SID - RWY 01/19 AKROM ONE (RNAV) and SID – PEWEE SIX (RNAV) procedures published in AIP DAP are cancelled, effective 202401241600 UTC.

3. CANCELLATION

- 3.1 This SUP will be cancelled when the charts are incorporated into AIP DAP. This is planned for DAP amendment 179, effective 13 June 2024.

4. DISTRIBUTION

- 4.1 Airservices Australia website only.

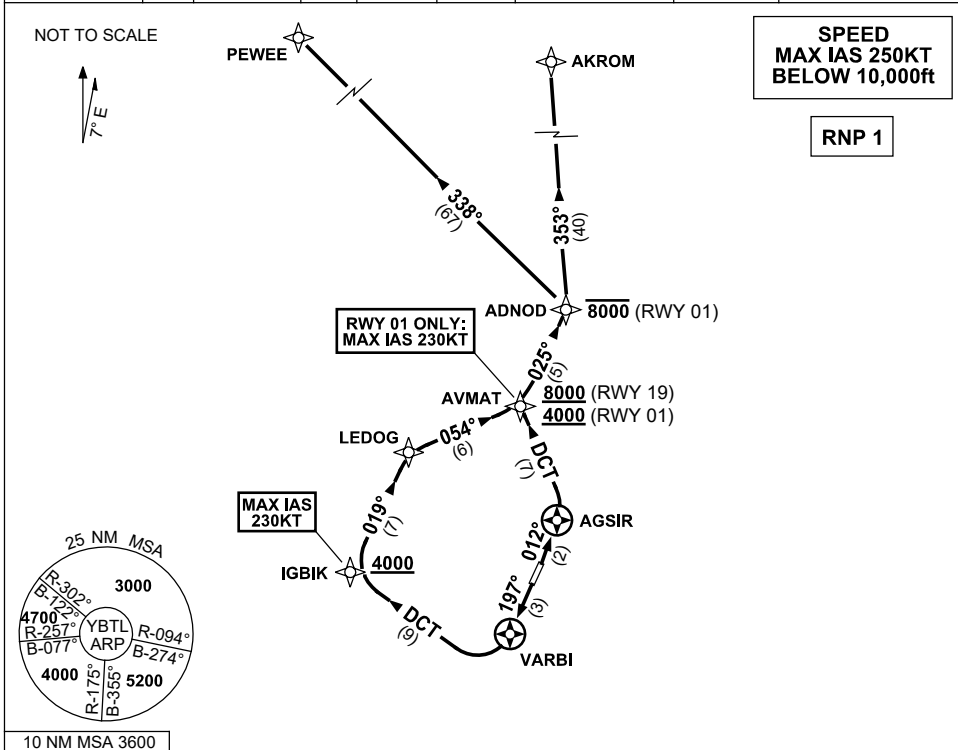
Appendix

1. YBTL SID RWY 01/19 ADNOD ONE (RNAV)

**APPENDIX 1
TO SUP H98/23**

**STANDARD INSTRUMENT DEPARTURES (SID)
RWY 01/19 ADNOD ONE (RNAV)
TOWNSVILLE/TOWNSVILLE INTL, QLD (YBTL)**

ATIS 114.1 133.5 276	ACD 128.1	SMC 121.8 264.6	TWR 118.3	APP/DEP 126.8	FIA (AH) BN CEN 120.55	CTAF+AFRU (AH) AFRU+PAL (AH) 118.3	AWIS (AH) 133.5	Bearings are Magnetic Elevations in FEET AMSL
-------------------------	--------------	--------------------	--------------	------------------	------------------------------	--	--------------------	--



ADNOD ONE DEPARTURE

RWY 01

- GRAD 5.4% to 1000ft then 3.3%
- MAX IAS 230KT UNTIL PASSING AVMAT**
- Track 012° to AGSIR
- Turn LEFT, track DCT to AVMAT
- Cross** AVMAT AT or ABV 4000ft (RQ GRAD to AVMAT: 7.0%)
- Turn RIGHT, track 025° to ADNOD
- Cross** ADNOD AT or BLW 8000ft

RWY 19

- GRAD 5.5% to 1300ft then 3.3%
- MAX IAS 230KT UNTIL PASSING IGBIK**
- Track 197° to VARBI
- Turn RIGHT, track DCT to IGBIK
- Cross** IGBIK AT or ABV 4000ft
- Turn RIGHT, track 019° to LEDOG
- Turn RIGHT, track 054° to AVMAT
- Cross** AVMAT AT or ABV 8000ft (RQ GRAD to AVMAT: 5.6%)
- Turn LEFT, track 025° to ADNOD

TRANSITIONS:

- AKROM** • From ADNOD turn LEFT, track 353° to AKROM
- PEWEE** • From ADNOD turn LEFT, track 338° to PEWEE