

ATFM Daily Plan - Thursday 02 May 2024

ADP Version 3



Airport	Planned GDPs	Total Arr/Dep	Affected Flights	Total Ground Delay	Av. Ground Delay	36 Hr Synoptic Forecast
YSSY	YSSY GDP-A 2000-0100	907	91	2,064	24.00	
YMML	YMML GDP-A 2000-0500	697	118	4,505	38.00	
YBBN	NONE	622	n/a	0	0.00	
YPPH-A*	YPPH GDP-A 0030-1400^	584	128	4,569	18.00	
YPPH-D*	YPPH GDP-D 2130-0030		101	1,241	12.30	
Totals		2810	438	12,379	20.91	

* denotes a revision has taken place

ATFM Daily Plan Summary Notes

YSSY	<p>Nil significant network risks identified at this time</p> <p>Midday Update: Showers. Moderate S to SE winds. 2000ft cloud. ATC ADVICE: 530 (274A/256D) movements remaining. Oversubscription in the 0700hr and at capacity in the 0800hr with limited recovery following.</p>
YMML	<p>Risk of early morning fog leading to a highly compacted program</p> <p>Midday Update: Patchy cloud around 2000ft clearing to CAVOK by mid-afternoon. Light SW winds. Hazy in the late evening. ATC ADVICE: 419 (223A/196D) movements remaining. Demand above capacity in the 09z hour with recovery available following.</p>
YBBN	<p>Nil significant network risks identified at this time</p> <p>Midday Update: Cloud 2500-3500ft. Chance of light showers, mainly evening. S to SE winds. Strong low-level head wind in the evening. ATC ADVICE: 373 (214A/159D) movements remaining. Capacity exceeds demand throughout the rest of the day.</p>
YPPH	<p>Runway and taxiway closures as per NOTAM. Nil other significant network risks identified.</p> <p>Midday Update: High-based showers and possible thunderstorms in the afternoon and evening. NE winds. ATC ADVICE: 336 (190A/146D) movements remaining. GDP in place with some oversubscription in the 02z hour, delay possible. Compacted afternoon within the GDP. Short notice staffing restrictions in Southwest Sector may trigger GDP revision. Expect further advice.</p>
Other Significant	Refer NOTAM for latest estimated airborne traffic delay advice.
Change Summary:	<p>[07:04pm] Version 1: Initial.</p> <p>[06:59am] Version 2: Morning Update</p> <p>[02:51pm] Version 3: afternoon update</p>

Teleconference Details
 1800 062 923
 Participant Code 7207 9651
 Guest Code 3064#

 NCC: 1800 020 626
atfmu@airservicesaustralia.com

CAP THREAT: 020730 - 020930

PRM: NOT REQ

YMEN SLOT SCHEME: NO

Issues expected to impact service delivery

Location	Issue/NOTAM Details
YPPH	C320/24 RWY 06/24 CLSD FM 05 012330 TO 05 020900, 05 032330 TO 05 040900
YPPH	C304/24 RWY 03/21 CLSD FM 05 022330 TP 05 030400
YSSY	C1423/24 RWY 07/25 CLSD DUE WIP FM 05 012100 TO 05 030700 DAILY 2100-0700
YSSY	C1361/24 RWY 07/25 CLSD DUE WIP EXC WITH 40MIN PN 04 291000 TO 05 021300, DAILY 1000-1300
YMML	C546/24 RWY 09/27 CLSD DUE WIP FM 05 080000 TO 05 080600

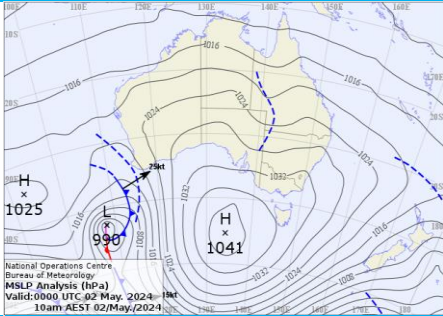
Network Weather Overview

From now to +72 hours

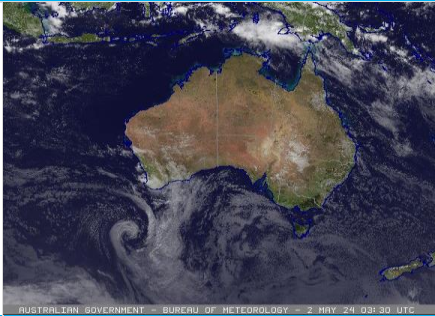
Thursday 02 May 2024

Weather Overview

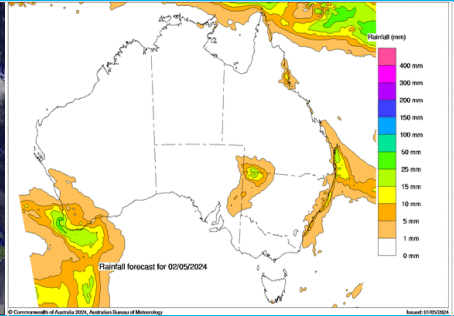
Mean Sea Level Pressure



Satellite Picture



Rainfall Outlook for today



Weather impact risk assessment Major Airports

	Brisbane	Melbourne	Perth	Sydney
PM Thursday	Cloud 2500-3500ft. Light showers clearing offshore in the evening. Moderate to fresh SE winds, tending lighter S'ly late evening. Afternoon cross winds. S to SE winds aloft 25-30 knots.	A little 2000-2500ft cloud clearing to CAVOK. Fog developing in the TMA late evening. Light SW to SSE winds, tending W to SW in the late evening.	Showers and thunderstorms. Cloud 1500-2500ft developing late afternoon. Moderate NW winds, tending light NE in the evening.	Cloud 2500-3000ft, lowering 1500-2500ft in the evening. Showers. Moderate to fresh SSE winds, tending lighter SW in the evening.
AM Friday	Showers, mainly offshore at first. Cloud 2000-2500ft, lifting 2500-3500ft. Light SW winds, tending SE and freshening. Winds aloft SE 25-30 knots.	Fog likely in the TMA. Chance of LVPs at the airport. Becoming CAVOK by mid-morning. Light WNW winds, variable at times, becoming S'ly late morning.	Showers, clearing late morning. Cloud 500-1500ft lifting 2500-3000ft late morning. Risk of overnight fog. Light NE winds, tending S to SW from mid-morning.	Showers. Cloud 1500-2000ft. Light to moderate S to SE winds.
PM Friday	Showers. Cloud 2500-4000ft. Moderate SE winds, tending lighter SSW in the evening. Winds aloft SE 20-25 knots.	CAVOK. Light S to SE winds, tending W to SW in the evening.	Cloud 3000-5000ft, becoming CAVOK. Light to moderate S to SW winds.	Showers. Cloud 1500-2500ft. Moderate SE winds.
AM Saturday	Light showers. Cloud 2000-3000ft. Light to moderate S to SW winds, tending SE and freshening. Winds aloft SE 25-30 knots.	Fog likely in the TMA. Chance of LVPs at the airport. Becoming CAVOK by mid-morning. Light W to SW winds.	Patchy cloud 3000-5000ft. Light E to SE winds turning S to SW late morning.	Showers. Cloud 1500-2000ft. Light to moderate S to SE winds.
PM Saturday	Showers, mainly inland. Cloud 2500-4000ft. Light to moderate E to SE winds.	CAVOK. Light S to SE winds, tending W to SW in the evening.	Cloud 4000-5000ft. Light to moderate S to SW winds.	Showers, heavy at times. Cloud 1500-2500ft. Light to moderate S to SE winds.
AM Sunday	Showers. 1500-2000ft cloud. Light SW winds turning E to SE late morning.	Fog likely in the TMA, chance at the airport. 1500-2000ft cloud developing during the morning. Light W to NW winds turning SW.	CAVOK. Light SE winds.	Rain, heavy at times. Chance of storms offshore. Gusty S winds reaching 20-25kt aloft. Cloud 1000-1500ft.

Significant other phenomena potentially affecting Australian FIRs

Volcanic Ash (VA) ≥ FL200	Mt. Ruang: detached ash cloud at FL450/FL630, moving west over Malay peninsula and the Malacca Strait, expected to dissipate during today. Aviation colour code: RED. For the latest information refer to http://www.bom.gov.au/aviation/volcanic-ash/darwin-va-advisory.shtml
Space Weather	For latest advisories refer to http://www.bom.gov.au/aviation/space-weather-advisories/
Tropical Cyclones	Nil significant. For the latest information refer to http://www.bom.gov.au/cyclone/

Weather risk assessment provided by NCC Meteorological Unit – Bureau of Meteorology
Contact NCCMET for further detail or advice

Phone: 02 6268 4448
Email: nccmet@bom.gov.au

Detailed advice from major Airport MET CDM products available at Airservices NOC Portal, <https://www.airservicesaustralia.com/noc/>

SYDNEY - YSSY GDP-A 2000-0100

Thursday 02 May 2024

ATFM-CDM Notes

METCDM Notes:

[1] 2000-1259: Reviewed: isolated showers persisting. No change to weather information. From late afternoon and into the evening, a strengthening of the ridge along the NSW coast tilts the gradient flow more towards the SE, making showers more likely. The trend in shower activity is indicated by the x-factoring through the day. Cloud generally 2000-3000ft, with lower patches in showers, before lowering 1500-2000ft in the evening. Moderate SSE winds, easing in the evening.

NCC DLM Notes:

[Nil DLM Notes]

SM Notes:

[1] 0600-0759: Staffing (XFactor Reason: Staffing)

GDP Notes

Nil significant network risks identified at this time

Midday Update: Showers. Moderate S to SE winds. 2000ft cloud.

ATC ADVICE: 530 (274A/256D) movements remaining. Oversubscription in the 0700hr and at capacity in the 0800hr with limited recovery following.

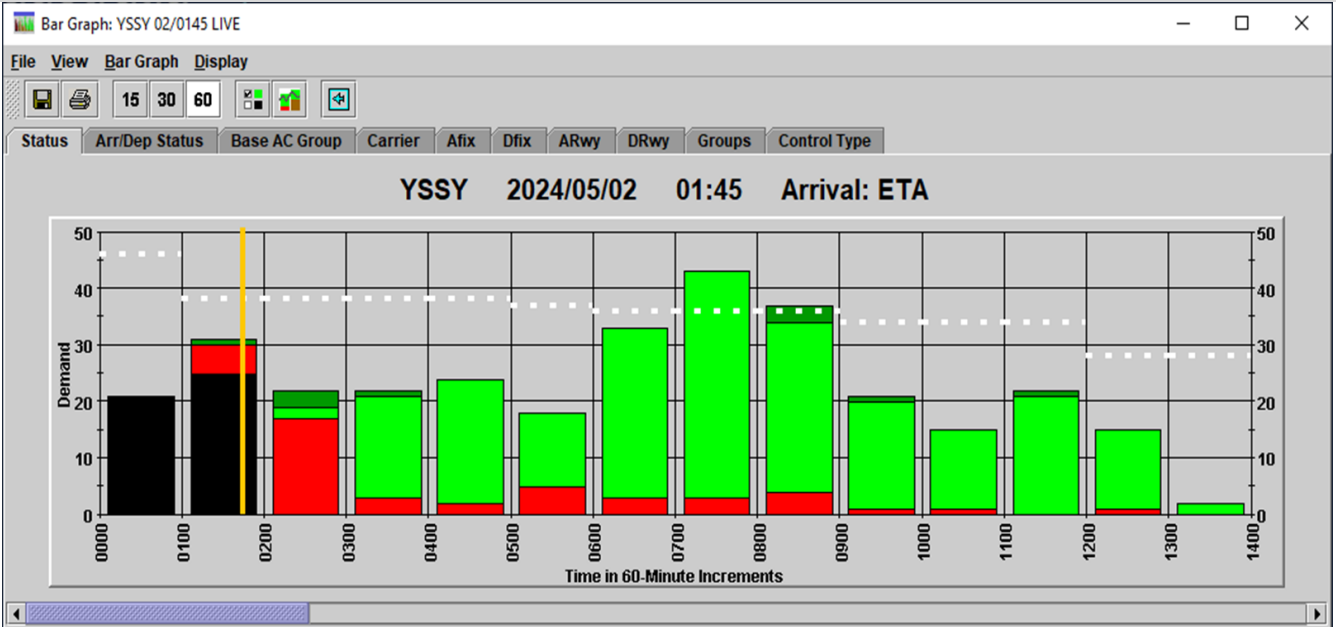
Tabulated Data

Time (Hour UTC)										020400	020500	020600	020700	020800	020900	021000	021100	021200
Runway Mode										16* ILSA*	16* ILSA*	16* ILSA*	16* ILSA*	16* ILSA*	16* ILSA*	16* ILSA*	16* ILSA*	16* ILSA*
Rate										38	37	36	36	36	34	34	34	28

Segmentation and Notes

METCDM Notes	1	1	1	1	1	1	1	1	1	1	1	1	1	1	1	1	1	1	0
Segmentation										1	1	1	1	2	2	2	2	2	

Bar Graph



MELBOURNE - YMML GDP-A 2000-0500

Thursday 02 May 2024

ATFM-CDM Notes

METCDM Notes:

- [1] 2000-0059: Reviewed: very low cloud around the whole Melbourne basin this morning, but having bottomed out around 350ft it has now lifted slightly and the risk of LVP has passed. The layer of cloud is quite thick so it will lift slowly through the morning - IMCB rates planned until 01Z. Winds are expected to remain light enough to maintain RWY 16/27 .
- [2] 0100-0659: Cloud lifting and becoming patchy gradually through the late morning and early afternoon; mostly CAVOK by 03 or 04Z. It is possible conditions could improve more rapidly to be VMCB by about 01Z. Light SSW winds.
- [3] 0700-1359: Likely CAVOK until the late evening, when some haze may develop as a precursor to fog development later in the night within the TMA. Light to moderate SSW winds, tend lighter SW in the evening, then WNW by the end of the program. LAHSO should be an option in the evening, if required.

NCC DLM Notes:

[Nil DLM Notes]

SM Notes:

[1] 1300-1359: Staffing

GDP Notes

Risk of early morning fog leading to a highly compacted program

Midday Update: Patchy cloud around 2000ft clearing to CAVOK by mid-afternoon. Light SW winds. Hazy in the late evening.
 ATC ADVICE: 419 (223A/196D) movements remaining. Demand above capacity in the 09z hour with recovery available following.

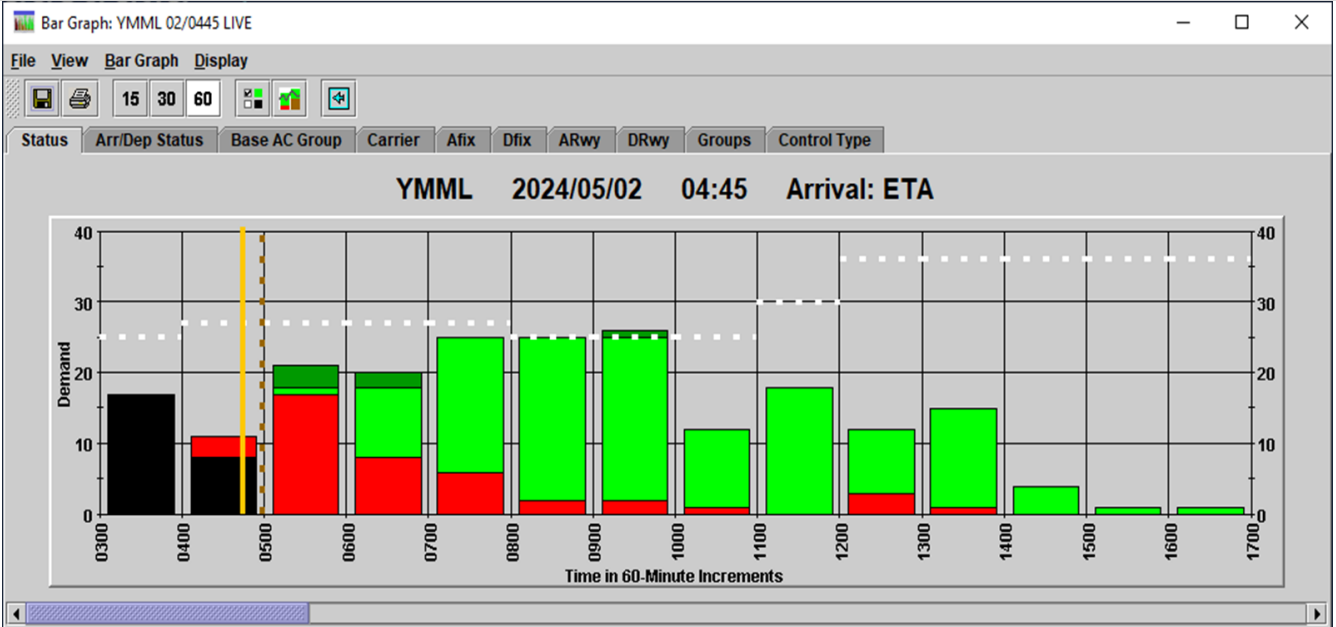
Tabulated Data

Time (Hour UTC)	020400	020500	020600	020700	020800	020900	021000	021100	021200	021300
Runway Mode	16/27 IMCA	16/27 IMCA	16/27 VMCA	16/27 VMCB	16/27 VMCB	27/34 HN LAHSO	27/34 HN LAHSO	27/34 HN LAHSO	27/34 HN LAHSO	27/34 HN LAHSO
Rate	27	27	27	27	25	25	25	30	36	24

Segmentation and Notes

METCDM Notes	1	1	1	1	1	2	2	2	2	2	2	3	3	3	3	3	3	3
Segmentation	1	1	1	1	1	1	1	1	2	2	2	2	2	2	2	2	2	2

Bar Graph



BRISBANE - Nil GDP

Thursday 02 May 2024

ATFM-CDM Notes

METCDM Notes:

[1] 2000-2359: A strong high south of the continent maintains a vigorous SE gradient flow over the Brisbane area. Showers offshore in the early morning, with patchy cloud 2500-3000ft. Light to moderate S to SW winds. Winds aloft SE'ly 25-35 knots.

[2] 0000-1259: The breakdown of the nocturnal inversion allows for the SE gradient wind to mix to the surface, resulting in a period of significant cross wind, particularly in the early afternoon. SE'lies will bring showers ashore, with a slight chance of brief visibility reductions during the afternoon. An x-factor has been applied to account for the risk of showers and cross wind, with both hazards becoming less likely towards late afternoon. Cloud 2500-4000ft. Moderate to fresh SE'lies ease toward evening and tend SSW'ly by late evening. Winds aloft remain SE'ly 25-30 knots.

NCC DLM Notes:

[Nil DLM Notes]

SM Notes:

[Nil SMTM Notes]

GDP Notes

Nil significant network risks identified at this time

Midday Update: Cloud 2500-3500ft. Chance of light showers, mainly evening. S to SE winds. Strong low-level head wind in the evening.

ATC ADVICE: 373 (214A/159D) movements remaining. Capacity exceeds demand throughout the rest of the day.

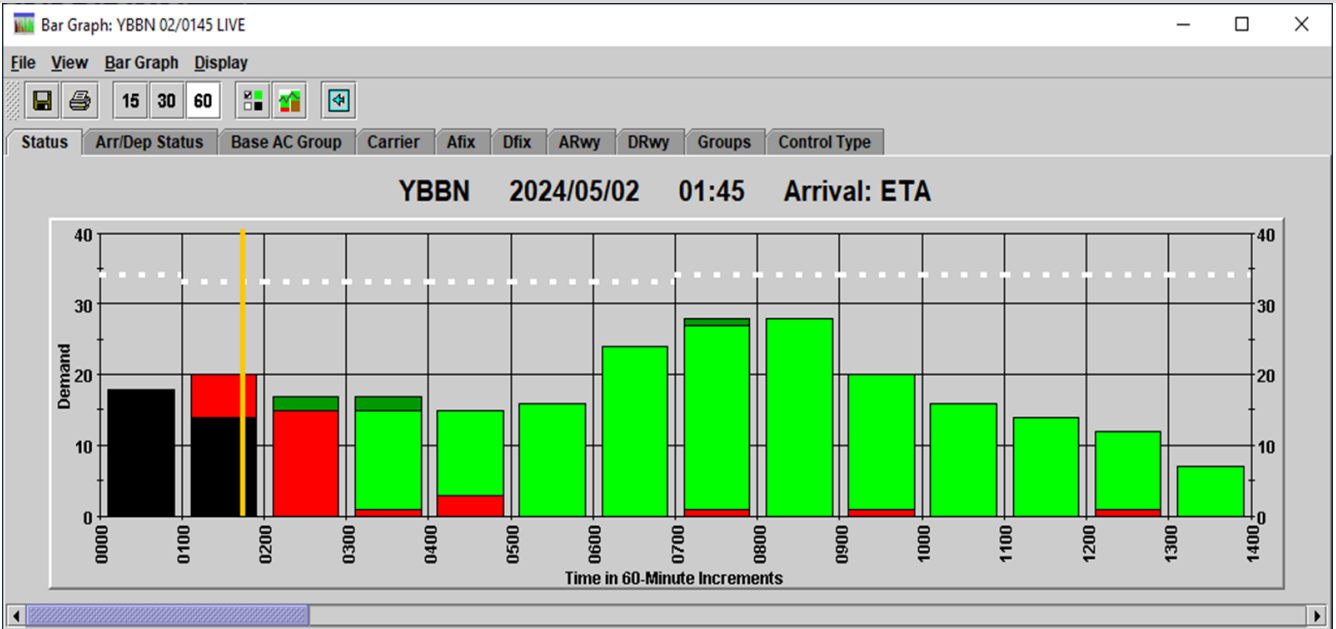
Tabulated Data

Time (Hour UTC)	012000	012100	012200	012300	020000	020100	020200	020300	020400	020500	020600	020700	020800	020900	021000	021100	021200	
Runway Mode	19 VMC	19 VMC	19 VMC	19 VMC	19 VMC	19 VMC	19 VMC	19 VMC	19 VMC	19 VMC	19 VMC	19 VMC	19 VMC	19 VMC	19 VMC	19 VMC		
Rate	34	34	34	34	34	33	33	33	33	33	33	34	34	34	34	34	34	

Segmentation and Notes

METCDM Notes	1	1	1	1	2	2	2	2	2	2	2	2	2	2	2	2	2	0
Segmentation	1	1	1	1	1	1	1	1	2	2	2	2	2	2	2	2	2	

Bar Graph



ATFM-CDM Notes

METCDM Notes:

- [1] 2200-0459: A pre-frontal trough approaches from the west during Thursday. Some high-based shower activity is possible in the early morning, although this is unlikely to impact operations. These showers contract further inland as the morning progresses. Cloud above 5000ft. Light NE winds gradually shift NW'ly by early afternoon.
- [2] 0500-1059: Reviewed: Instability increases ahead of the trough, with isolated shower and thunderstorm activity possible in the N and E TMA from early afternoon, moving away from the aerodrome. An active line of showers and storms to the SW near Bunbury this morning looks more likely to reach the TMA in the later, with impacts on the RWY 03 approach path possible around 05-07Z. Thunderstorms may reach the aerodrome, particularly around 07-09Z, and the risk of storms inland to the N/E persists as well. Lower rates are planned from 06-09Z to guard against this increased storm risk. Cloud developing around 2500ft in this period. Moderate NW winds tend lighter westerly for a period in the late afternoon/early evening. The previously forecast period of WSW winds appears less likely now - RWY 21/24 is still planned but winds may favour RWY 03/06 throughout.
- [3] 2300-2359: In the late evening, cloud lowers to 1000-1500ft as the moist, low-level flow becomes blocked by the escarpment. Showers becoming more isolated. Still a slight chance of thunderstorms in the E TMA but generally well to the south by then. Light winds, mostly W to NW but may vary to the SW at times.
- [4] 0000-0859: RWY 06/24 closed 2330-0900Z (NOTAM: C320/24).

NCC DLM Notes:

[Nil DLM Notes]

SM Notes:

- [1] 0200-0559: Due to RWY/TWY restrictions

GDP Notes

Runway and taxiway closures as per NOTAM. Nil other significant network risks identified.

Midday Update: High-based showers and possible thunderstorms in the afternoon and evening. NE winds.

ATC ADVICE: 336 (190A/146D) movements remaining. GDP in place with some oversubscription in the 02z hour, delay possible. Compacted afternoon within the GDP. Short notice staffing restrictions in Southwest Sector may trigger GDP revision. Expect further advice.

Tabulated Data

Time (Hour UTC)	020400	020500	020600	020700	020800	020900	021000	021100	021200	021300
Runway Mode	03/06 VMC	24 IMCB	24 IMCB	24 IMCB	03 VMC	21/24 IMCA	21/24 IMCA	21/24 IMCA	03 IMCB	03 IMCB
Rate-Arrs	22	22	20	20	20	20	22	22	20	20
Rate-Deps										

Segmentation and Notes

METCDM Notes	1	1&3	1&4	1&4	1&4	1&4	1&4	2&4	2&4	2&4	2&4	2	2	3	3	3
Segmentation			1	1	1	1	2	2	2	2	2	2	2	2	2	2

Bar Graph

